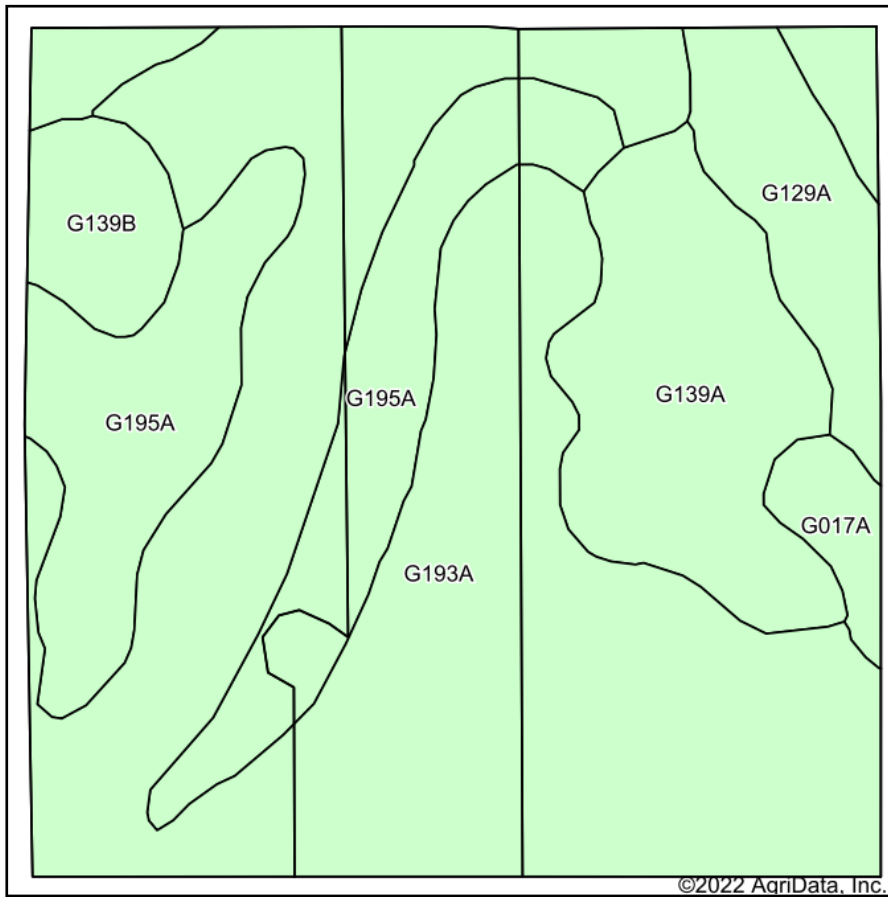
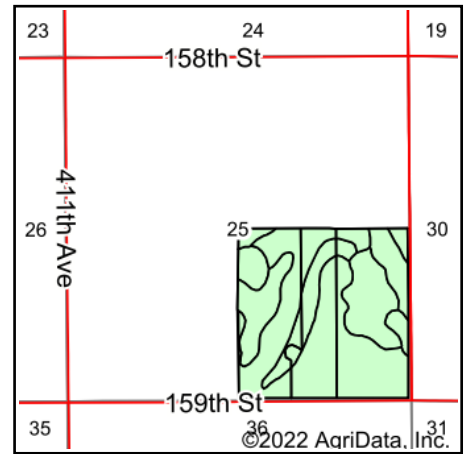


Soils Map



Soils data provided by USDA and NRCS.



State: **South Dakota**
 County: **Spink**
 Location: **25-119N-60W**
 Township: **Olean**
 Acres: **156.41**
 Date: **10/25/2022**

ADVANTAGE
Land Co.

Maps Provided By:

 CUSTOMIZED ONLINE MAPPING
 © AgriData, Inc. 2021 www.AgriDataInc.com



Area Symbol: SD115, Soil Area Version: 22

Code	Soil Description	Acres	Percent of field	Non-Irr Class *c	Productivity Index
G193A	Aastad-Forman loams, 0 to 3 percent slopes	85.58	54.7%	IIc	92
G195A	Aastad-Tonka complex, 0 to 3 percent slopes	32.10	20.5%	IIc	79
G139A	Forman-Cresbard loams, 0 to 3 percent slopes	20.31	13.0%	IIc	79
G129A	Cavour-Ferney loams, 0 to 3 percent slopes	9.39	6.0%	IVs	35
G139B	Forman-Cresbard loams, 3 to 6 percent slopes	5.87	3.8%	IIe	76
G017A	Heil silt loam, till substratum, 0 to 1 percent slopes	3.16	2.0%	VIIs	11
Weighted Average				2.20	82

*c: Using Capabilities Class Dominant Condition Aggregation Method
 Soils data provided by USDA and NRCS.