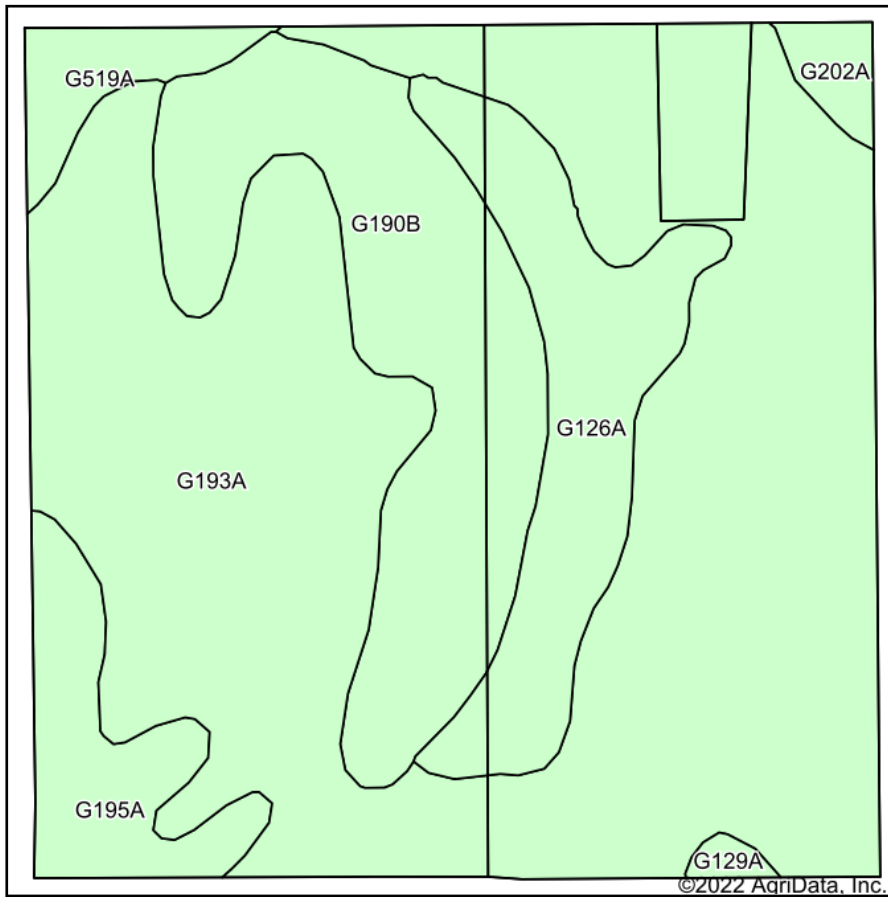
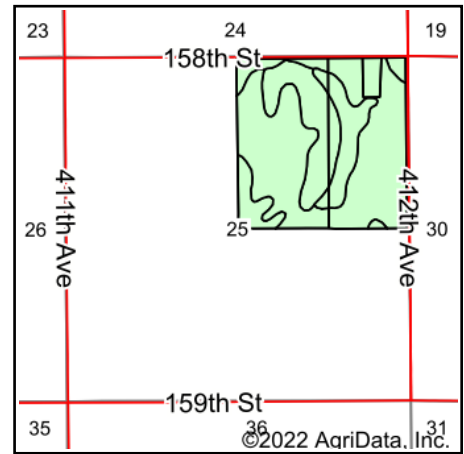


# Soils Map



Soils data provided by USDA and NRCS.



State: **South Dakota**  
 County: **Spink**  
 Location: **25-119N-60W**  
 Township: **Olean**  
 Acres: **155.51**  
 Date: **10/25/2022**

**ADVANTAGE**  
*Land Co.*

Maps Provided By:



Area Symbol: SD115, Soil Area Version: 22

Code	Soil Description	Acres	Percent of field	Non-Irr Class *c	Productivity Index
G193A	Aastad-Forman loams, 0 to 3 percent slopes	97.19	62.5%	IIc	92
G190B	Forman-Buse-Aastad loams, 1 to 6 percent slopes	27.32	17.6%	Ile	79
G126A	Cresbard-Cavour-Heil complex, 0 to 3 percent slopes	16.20	10.4%	IIIs	45
G195A	Aastad-Tonka complex, 0 to 3 percent slopes	8.64	5.6%	IIc	79
G519A	Moritz-Lowe, occasionally flooded loams, 0 to 2 percent slopes	3.78	2.4%	Ile	68
G202A	Peever-Cavour complex, 0 to 3 percent slopes	1.78	1.1%	IIs	61
G129A	Cavour-Ferney loams, 0 to 3 percent slopes	0.60	0.4%	IVs	35
<b>Weighted Average</b>				<b>2.11</b>	<b>82.9</b>

\*c: Using Capabilities Class Dominant Condition Aggregation Method  
 Soils data provided by USDA and NRCS.