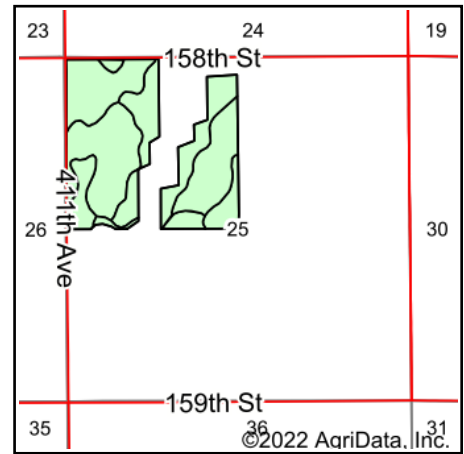
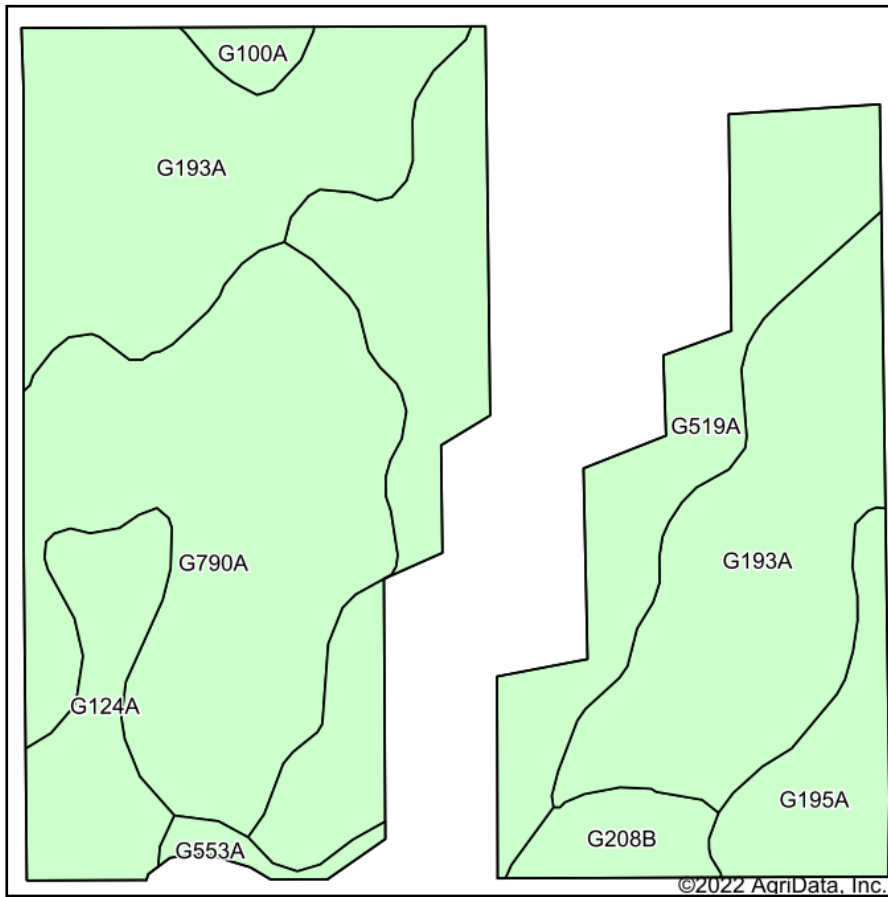


# Soils Map



State: **South Dakota**  
 County: **Spink**  
 Location: **25-119N-60W**  
 Township: **Olean**  
 Acres: **120.19**  
 Date: **10/25/2022**

**ADVANTAGE**  
*Land Co.*

Maps Provided By:  
  
 CUSTOMIZED ONLINE MAPPING  
 © AgriData, Inc. 2021 www.AgriDataInc.com



Area Symbol: SD115, Soil Area Version: 22

Code	Soil Description	Acres	Percent of field	Non-Irr Class *c	Productivity Index
G193A	Aastad-Forman loams, 0 to 3 percent slopes	40.96	34.1%	IIc	92
G790A	Kranzburg-Brookings silt loams, 0 to 2 percent slopes	30.19	25.1%	IIc	91
G519A	Moritz-Lowe, occasionally flooded loams, 0 to 2 percent slopes	29.27	24.4%	Ile	68
G124A	Cresbard-Cavour loams, 0 to 3 percent slopes	7.59	6.3%	IIIs	58
G195A	Aastad-Tonka complex, 0 to 3 percent slopes	6.54	5.4%	IIc	79
G208B	Peever-Buse clay loams, 1 to 6 percent slopes	3.25	2.7%	IIle	63
G100A	Hamerly-Tonka complex, 0 to 3 percent slopes	1.22	1.0%	Ile	64
G553A	Ranslo-Harriet loams, 0 to 2 percent slopes, occasionally flooded	1.17	1.0%	IVs	27
<b>Weighted Average</b>				<b>2.11</b>	<b>81.3</b>

\*c: Using Capabilities Class Dominant Condition Aggregation Method  
 Soils data provided by USDA and NRCS.