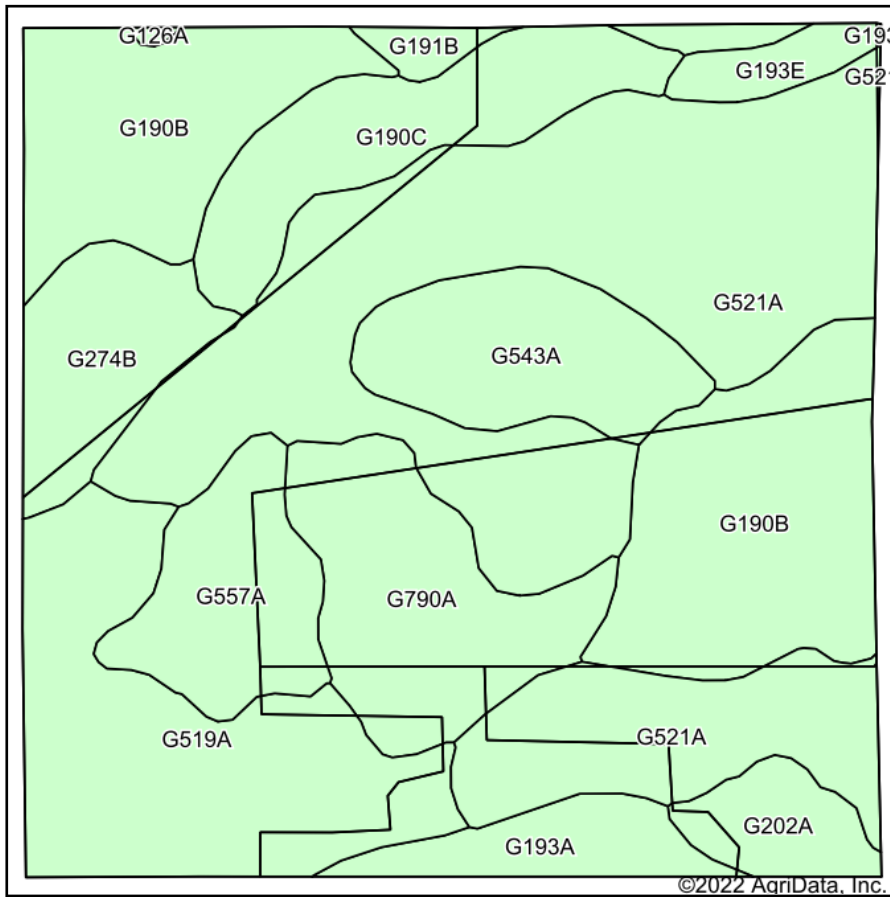
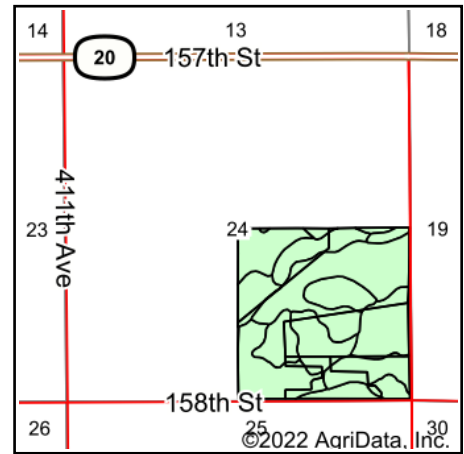


Soils Map



Soils data provided by USDA and NRCS.



State: **South Dakota**
 County: **Spink**
 Location: **24-119N-60W**
 Township: **Olean**
 Acres: **157.07**
 Date: **11/1/2022**

ADVANTAGE
Land Co.

Maps Provided By:

 CUSTOMIZED ONLINE MAPPING
 © AgriData, Inc. 2021 www.AgriDataInc.com



Area Symbol: SD025, Soil Area Version: 24
 Area Symbol: SD115, Soil Area Version: 22

Code	Soil Description	Acres	Percent of field	Non-Irr Class *c	Productivity Index
G521A	Lowe loam, 0 to 1 percent slopes, occasionally flooded	48.88	31.1%	IVw	41
G190B	Forman-Buse-Aastad loams, 1 to 6 percent slopes	28.24	18.0%	Ile	79
G519A	Moritz-Lowe, occasionally flooded loams, 0 to 2 percent slopes	19.89	12.7%	Ile	68
G790A	Kranzburg-Brookings silt loams, 0 to 2 percent slopes	12.44	7.9%	Ilc	91
G190C	Forman-Buse-Aastad loams, 3 to 9 percent slopes	10.30	6.6%	IIIe	65
G543A	Playmoor silty clay loam, 0 to 2 percent slopes, frequently flooded	9.43	6.0%	VIw	24
G557A	Ranslo silty clay loam, 0 to 1 percent slopes, occasionally flooded	8.27	5.3%	IVs	31
G274B	Renshaw-Fordville loams, 2 to 6 percent slopes	7.29	4.6%	IVe	46
G193A	Aastad-Forman loams, 0 to 3 percent slopes	4.45	2.8%	Ilc	92
G202A	Peever-Cavour complex, 0 to 3 percent slopes	3.70	2.4%	Ils	61
G193E	Buse-Vida, moist-Forman loams, 9 to 25 percent slopes	2.14	1.4%	VIe	29
G191B	Forman-Aastad loams, 0 to 6 percent slopes	1.90	1.2%	Ile	85
G126A	Cresbard-Cavour-Heil complex, 0 to 3 percent slopes	0.14	0.1%	IIIs	45
Weighted Average				3.18	57.8

*c: Using Capabilities Class Dominant Condition Aggregation Method
 Soils data provided by USDA and NRCS.