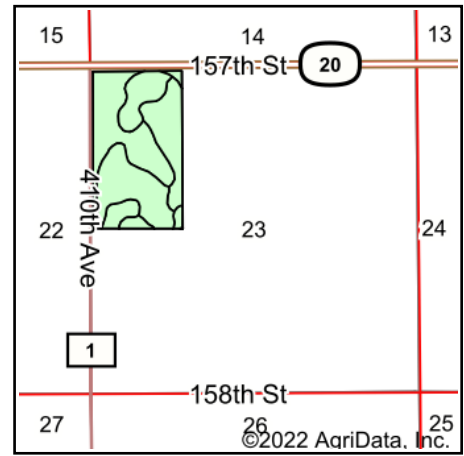
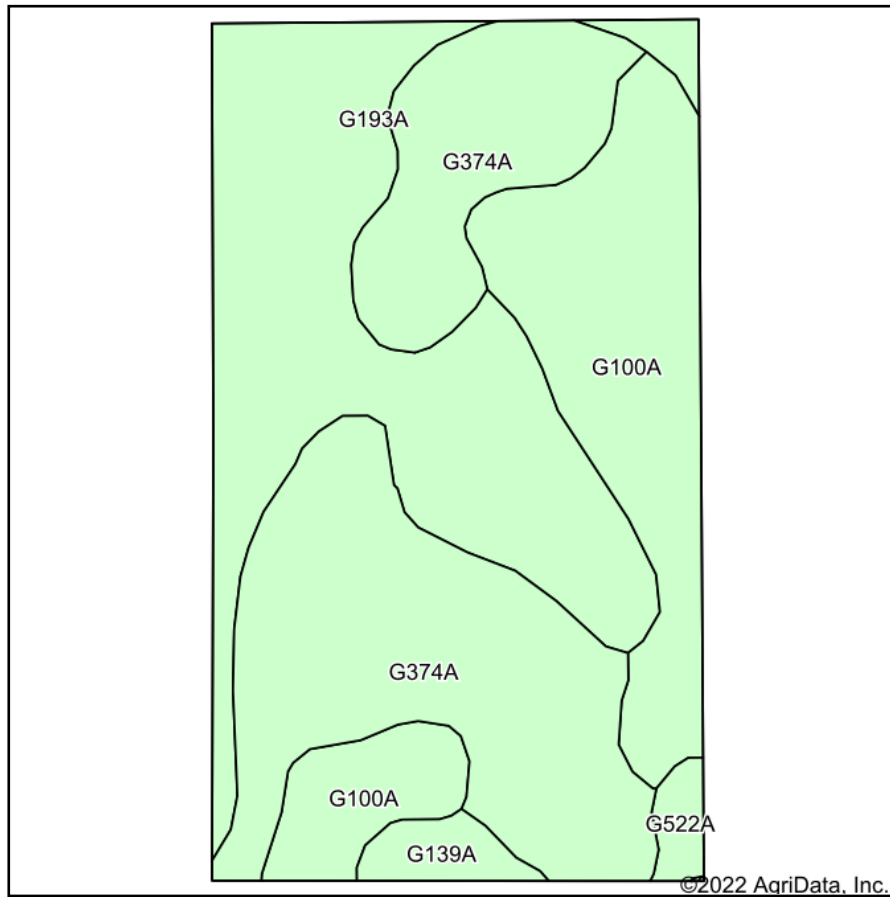


# Soils Map



State: **South Dakota**  
 County: **Spink**  
 Location: **23-119N-60W**  
 Township: **Olean**  
 Acres: **83.62**  
 Date: **11/1/2022**

**ADVANTAGE**  
*Land Co.*

Maps Provided By:  
  
 CUSTOMIZED ONLINE MAPPING  
 © AgriData, Inc. 2021 www.AgriDataInc.com



Area Symbol: SD115, Soil Area Version: 22

Code	Soil Description	Acres	Percent of field	Non-Irr Class *c	Productivity Index
G374A	Egeland-Embsden complex, 0 to 2 percent slopes	32.19	38.5%	IIIe	64
G193A	Aastad-Forman loams, 0 to 3 percent slopes	27.91	33.4%	IIc	92
G100A	Hamerly-Tonka complex, 0 to 3 percent slopes	20.64	24.7%	Ile	64
G139A	Forman-Cresbard loams, 0 to 3 percent slopes	1.79	2.1%	IIc	79
G522A	Low loam, 0 to 1 percent slopes, frequently flooded	1.09	1.3%	VIw	22
<b>Weighted Average</b>				<b>2.44</b>	<b>73.1</b>

\*c: Using Capabilities Class Dominant Condition Aggregation Method  
 Soils data provided by USDA and NRCS.