



Natural Resources Conservation Service
200 Fourth Street SW
Huron, South Dakota 57350

Phone: (605) 352-1200
Fax: (605) 352-1270

DATE 6/18/14

CERTIFIED MAIL – RETURN RECEIPT REQUESTED

Hal Werner
P.O. Box 22
Oacoma, SD 57365



Dear Hal:

As a result of your request for an evaluation of proposed wetland activity via form AD-1026 Highly erodible Land Conservation (HELC) and Wetland Conservation (WC) Certification, the Natural Resources Conservation Service (NRCS) is issuing a preliminary certified wetland determination.

The regulations for the Wetland Conservation (WC) compliance provisions of the 1985 Food Security Act, as amended, are found at Title 7 Code of Federal Regulations (7 CFR) §12. The purposes of the provisions are to remove certain incentives for persons to produce agricultural commodities on highly erodible land or converted wetland.

The regulations describe several exemptions (7 CFR §12.5 (b)) from ineligibility and outline the NRCS involvement in implementing the WC Compliance provisions. This determination was conducted in accordance with the current federal wetland delineation procedures as found in the most current versions of the National Food Security Act Manual (NFSAM), the 1987 United States Army Corps of Engineers (USACE) Wetland Delineation Manual, Technical Report Y-87-1, the USACE Regional Supplements, and/or State Offsite Methods/Mapping Conventions.

With this letter the NRCS is issuing a **preliminary technical determination**, in accordance with the WC Compliance provisions. This preliminary technical determination was conducted by the NRCS on June 13, 2014. The attached NRCS-CPA-026E, Highly Erodible Land and Wetland Conservation Determination, and map depict the wetland exemptions, referred to as "labels". The area identified other than Non-Wetland is wetland for the following reasons:

Presence of Hydrophytic Vegetation:

Hydrophytic vegetation means plants growing in water or in a substrate that is at least periodically deficient in oxygen during a growing season as a result of excessive water content (16 U.S.C. §3801(a)(12)).

Presence of Hydric Soils:

Hydric soil means soil that, in its undrained condition, is saturated, flooded, or ponded long enough during a growing season to develop an anaerobic condition that supports the growth and regeneration of hydrophytic vegetation (16 U.S.C. §3801(a)(13)).

Presence of Wetland Hydrology:

Wetland hydrology means inundation or saturation of the site by surface or groundwater during the growing season at a frequency and duration sufficient to support a prevalence of hydrophytic vegetation. (7 CFR §12.2).

The wetland area(s) were evaluated for applicable exemptions and labeled accordingly.

Helping People Help the Land

An Equal Opportunity Provider and Employer

You may appeal this preliminary technical determination in accordance with the laws and federal regulations set forth at 7 CFR §614, the NRCS Appeals Procedures, 7 CFR §780, the Food Security Act Appeals Procedures, and 7 CFR §11, the National Appeals Division (NAD) Rules of Procedure, as follows:

- **You may request a field review and reconsideration** by the NRCS in accordance with 7 CFR 614.7(b). Any request for field review and reconsideration will be conducted with you or your authorized representative present, where you will be able to present evidence that NRCS may not have previously considered. The NRCS will consider all new information.
- To request a field review and reconsideration, you must contact the NRCS, in writing, **no later than 30 days** from the date that you receive this notification at:

U.S. Department of Agriculture
Natural Resources Conservation Service
200 Paul Gust RD
Chamberlain, SD 57325-1000

- **If you do not request a field review, you may request mediation** of the preliminary technical determination in accordance with 7 CFR 614.7(a)(2). Mediation is completed in good faith. Parties mediating a dispute are not free to make their own law or policy and mediation is not a means to obtain a result not otherwise permissible under statute, regulations, or generally applicable agency policy and program procedures. Within these parameters, mediation of disputes can produce benefits when the mediation reveals additional relevant facts and new insights.

To request mediation you must contact Mr. Gerald E. Jasmer in writing **no later than 30 days** from the date that you receive this notification at:

State Resource Conservationist
Natural Resources Conservation Service
200 Fourth Street SW
Huron, South Dakota 57350-2475
Phone: (605) 352-1234
Fax: (605) 352-1261

- **You may request a waiver of your rights** to this preliminary review and reconsideration or mediation in accordance with 7 CFR §614.7(d) if you want an immediately-final wetland technical determination by writing to the State Conservationist at:

Jeffrey J. Zimprich
Natural Resources Conservation Service
200 Fourth Street SW
Huron, South Dakota 57350-2475
Phone: (605) 352-1234
Fax: (605) 352-1261

If you do not select any of your preliminary appeal rights, this preliminary technical determination will become both a final technical determination in accordance with 7 CFR §614.8(a)(1) and a certified wetland determination in accordance with 7 CFR §12.30(c). A technical determination becomes a final USDA decision when the time to request appeal expires without appealing the decision. A final technical determination becomes appealable 30 days after receipt of the preliminary technical decision.

If the final technical determination is a result of the expiration of the 30-day period following receipt of this preliminary technical determination, it may be appealed, **within 30 days**, to either of the following:

- Appeal to the Brule/Buffalo County Farm Service Agency County Committee
OR

- Appeal to the NAD at the following address:

National Appeals Division, Western Regional Office
755 Parfet Street, Suite 494
Lakewood, Colorado 80215-5506
Phone: (800) 541-0483 or (303) 236-2862
TTY: (800) 497-0253
Fax: (303) 236-2820

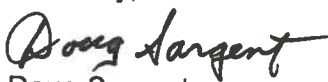
It is your responsibility to ensure that your actions do not impact wetlands protected by a United States Fish and Wildlife Service (FWS) or any other conservation easement. For any questions regarding FWS conservation easements on the tract or adjacent land, please contact the wetland management district office located in Lake Andes, SD, at (605)-487-7603. For any other easements, please contact the local NRCS office.

This preliminary technical determination has been conducted for the purpose of implementing the WC compliance provisions of the 1985 Food Security Act, as amended. This determination may not be valid for the Clean Water Act. If you intend to conduct any activity that constitutes a discharge of dredged or fill material into wetlands or Other Waters, you should request a jurisdictional determination by contacting the United States Army Corps of Engineers (USACE) at **(605) 224-8531**, Pierre, SD, before starting the work.

There may be opportunities to utilize mitigation if you have an interest in converting the labeled wetlands (W's), farmed wetlands (FW's), and farmed wetland pasture (FWP), found in this determination. Mitigation is the compensation of lost wetlands through wetland restoration, enhancement, or the creation of new wetlands. Mitigation can not occur at the expense of the federal government. Mitigated wetlands must be in the same local watershed as the wetlands you wish to convert. The landowner must grant an easement that remains in effect as long as the original wetland remains converted and the easement will be recorded on public land records for the mitigated wetlands. All of the above activities, as well as, a mitigation plan, must be completed before any wetland conversions could occur.

If you are the owner of this tract of land and have a tenant, I urge you to discuss this letter and accompanying NRCS-CPA-026E with your tenant. Likewise, if you are the tenant of this tract of land, I urge you to discuss this letter with your landlord.

Sincerely,


Doug Sargent
Biologist

Attachments

cc: (with attachments)
James Anderson, CED, FSA, Chamberlain Service Center
Stacy Turgeon, DC, NRCS, Chamberlain Service Center



The U.S. Department of Agriculture (USDA) prohibits discrimination in all its programs and activities on the basis of race, color, national origin, gender, religion, age, disability, political beliefs, sexual orientation, and marital or family status. (Not all prohibited bases apply to all programs.) Persons with disabilities who require alternative means for communication of program information (Braille, large print, audiotape, etc.) should contact USDA's TARGET Center at 202-720-2600 (voice and TDD). To file a complaint of discrimination, write USDA, Assistant Secretary for Civil Rights, 1400 Independence Avenue, S.W., Stop 9410, Washington, DC 20250-9410, or call toll-free at (866) 632-9992 (English) or (800) 877-8339 (TDD) or (866) 377-8642 (English Federal-relay) or (800) 845-6136 (Spanish Federal-relay). USDA is an equal opportunity provider and employer.

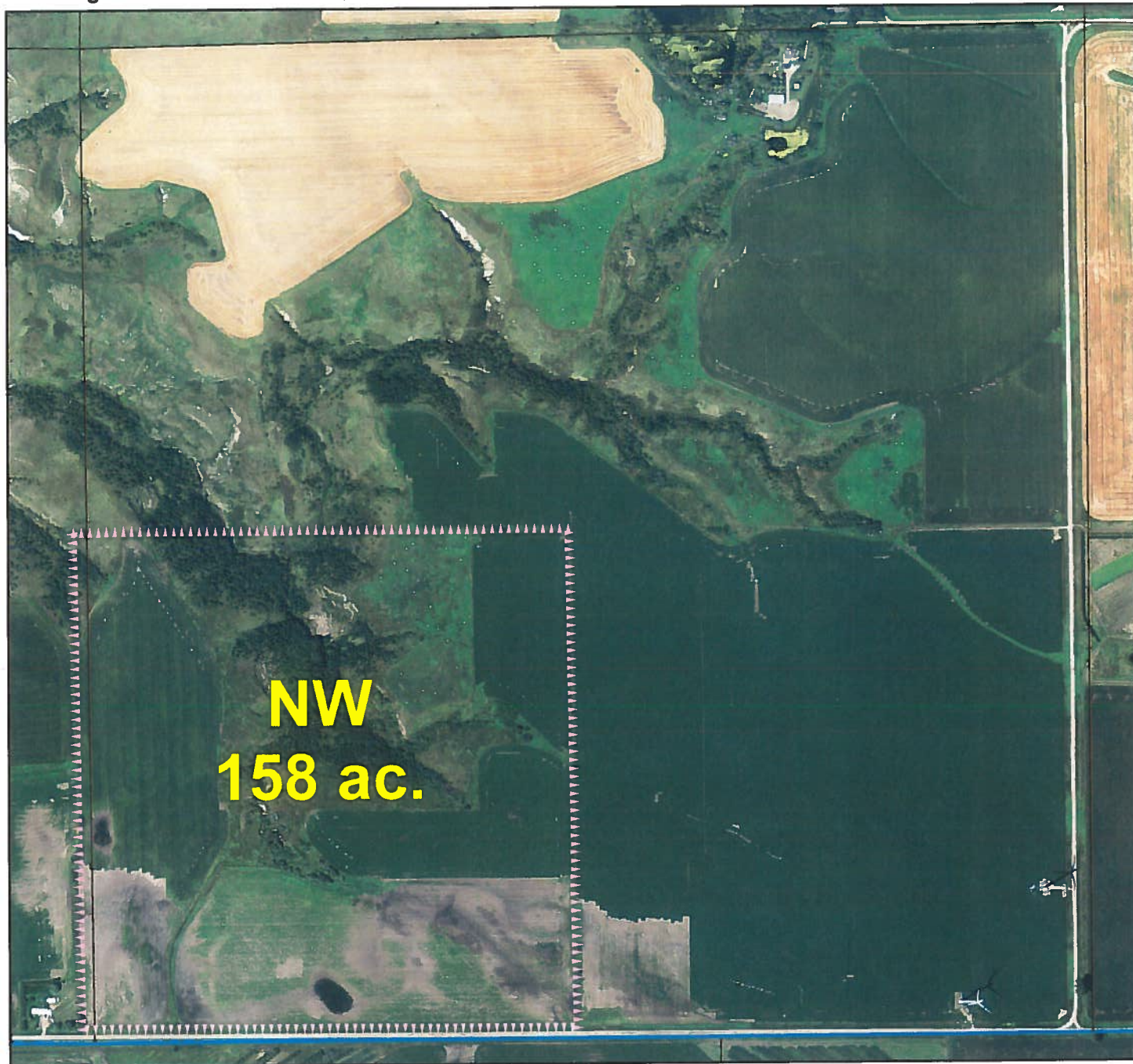
***DEFINITIONS OF WETLAND LABEL CODES**

AW	<u>Artificial Wetland</u> : An area that was formerly a non-wetland area under natural conditions but now exhibits wetland characteristics because of the influence of human activities. These areas are exempt from the Food Security Act of 1985, as amended. This label includes irrigation induced wetlands.
CC	<u>Commenced Conversion</u> : A wetland, farmed wetland, farmed wetland pasture, or converted wetland on which the conversion began but was not completed before December 23, 1985, was approved by FSA to continue, and the conversion was completed by January 1, 1995.
CPD	<u>COE Permit with Mitigation</u> : A converted wetland authorized by a permit issued under Section 404 of the Clean Water Act. Production of agricultural commodities is allowed subject to conditions of the permit.
CMW	<u>Categorical Minimal Effect</u> : A wetland that meets specific categories of conversion activities that have been determined by NRCS to have minimal effect, individually and cumulatively, on the functions and values of the wetland and the wetlands in the watershed.
CW	<u>Converted Wetland</u> : A wetland converted between December 23, 1985, and November 28, 1990. Production of an agricultural commodity or additional manipulation of these areas will yield USDA benefit ineligibility. Also, these areas are wetlands converted after December 23, 1985, by a county, drainage district, or similar entity. For these instances, production of an agricultural commodity or forage for mechanical harvest or additional manipulation will cause ineligibility for USDA program benefits.
CW+year	<u>Converted Wetland + (year the conversion occurred)</u> : A wetland converted after November 28, 1990, where the USDA program participant is ineligible for benefits until the wetland is restored or mitigated unless an exemption applies.
CWNA	<u>Converted Wetland Non-Agricultural Use</u> : A wetland converted after November 28, 1990, to a use other than agricultural commodity production. Label not used for certified wetland determinations completed after 2/2008.
CWTE	<u>Converted Wetland Technical Error</u> : A wetland converted or commenced after December 23, 1985, based on an incorrect NRCS determination. This label does not apply to obvious wetlands as defined in the National Food Security Act Manual.
FW	<u>Farmed Wetland</u> : A wetland that was manipulated and planted before December 23, 1985, but still meets inundation or saturation criteria. These areas may be farmed and maintained as documented before December 23, 1985, as long as they are not abandoned (i.e., management or maintenance for commodity production ceased for 5 consecutive years).
FWP	<u>Farmed Wetland Pasture or Hayland</u> : A wetland that is used for pasture or haying, was manipulated and planted before December 23, 1985, but still meets the inundation or saturation criteria. These areas may be farmed and maintained as documented before December 23, 1985, as long as they are not abandoned (i.e., management or maintenance for commodity production ceased for 5 consecutive years).
MIW	<u>Mitigation Exemption</u> : A converted wetland, farmed wetland or farmed wetland pasture of which the acreage, functions and values lost have been compensated for through an NRCS-approved mitigation plan.
MW	<u>Minimal Effect Exemption</u> : A converted wetland that is exempt from the wetland conservation provisions of the Food Security Act of 1985, as amended, based on NRCS determination that the conversion has or will have a minimal effect, individually and cumulatively, on the functions and values of the wetland and the wetlands in the watershed.
MWM	<u>Mitigation Site</u> : This site of wetland restoration, enhancement, or creation serving as mitigation for the mitigation exemption (MIW) site.
NI	<u>Not Inventoried</u> : An area where no wetland determination has been conducted. Label not used for certified wetland determinations completed after 2/2008.
NW	<u>Non-Wetland</u> : An area that does not contain a wetland. Also, includes wetlands converted before December 23, 1985, but a commodity crop was not produced and the area does not meet wetland criteria (not been abandoned).
PC	<u>Prior Converted Cropland</u> : A wetland converted to cropland before December 23, 1985, and as of December 23, 1985, was capable of being cropped and did not meet farmed wetland hydrology criteria. These areas are not subject to the wetland conservation provisions of the Food Security Act of 1985, as amended, unless further drainage manipulation affects adjacent wetlands.
PC/NW	<u>Prior Converted Cropland/Non-Wetland</u> : An area that contains both PC and NW.
TP	<u>Third-Party Exemption</u> : A wetland converted after December 23, 1985, by a third party who is not associated with the participant, and the conversion is not a result of a scheme or device. A third party does not include predecessors in interest on the tract, drainage districts, or other local government entities.
W	<u>Wetland</u> : An area meeting wetland criteria that was not converted after December 23, 1985. These areas include farmed wetlands and farmed wetland pasture that have been abandoned.
WX	<u>Manipulated Wetlands</u> : A wetland manipulated after December 23, 1985, but the manipulation was not for the purpose of making production possible and production was not made possible. These areas include wetlands manipulated by drainage maintenance agreements.

Certified Wetland Determination

Field Office: Chamberlain FO
Certified By: Doug Sargent
Legal Desc: SW 1/4 S 32, T 105N, R 70W

Agency: USDA-NRCS
Certified Date: 6/16/14
Tract: 2683



Legend

Certified Wetland
Determination Boundary

Wetlands

Wetlands

Ditch

NI

NI/Ditch

Tile

0 345 690 1,380 2,070 2,760 3,450 Feet

W Wetland
FW Farmed Wetland Drained or modified & cropped
prior to 12-23-1985, but still meets wetland criteria
PC Prior Converted
NW Non Wetland
See NRCS CPA-O26E for definitions and additional info.



