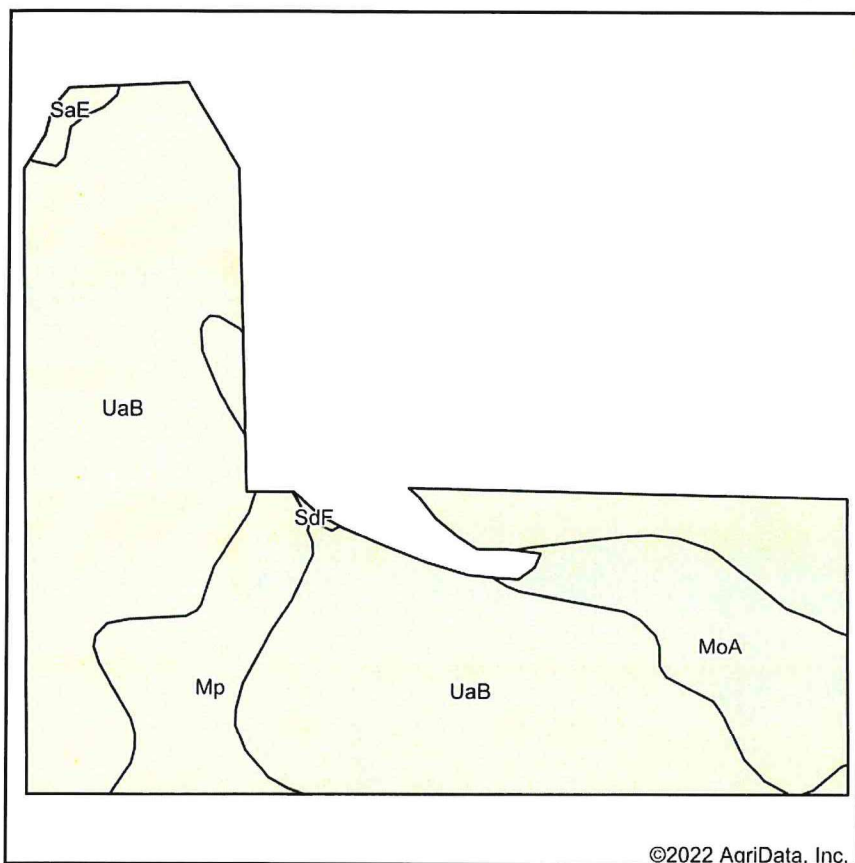
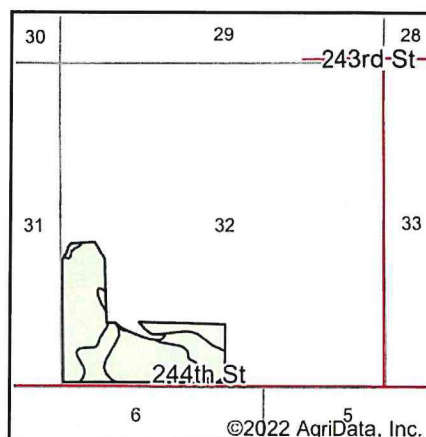


Soils Map



Soils data provided by USDA and NRCS.

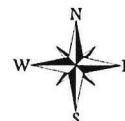


State: **South Dakota**
 County: **Brule**
 Location: **32-105N-70W**
 Township: **West Point**
 Acres: **75.14**
 Date: **11/1/2022**

ADVANTAGE
Land Co.

Maps Provided By

 CUSTOMIZED ONLINE MAPPING
 © AgriData, Inc. 2021 www.AgriDataInc.com



Area Symbol: SD603, Soil Area Version: 25

Code	Soil Description	Acres	Percent of field	Non-Irr Class *c	Irr Class *c	Productivity Index
UaB	Uly silt loam, 2 to 6 percent slopes	56.44	75.1%	Ile	Ile	84
MoA	Mobridge silt loam, 0 to 2 percent slopes	9.32	12.4%	Ilc		94
Mp	Mobridge-Plankinton silt loams	8.62	11.5%	Ilc		86
SaE	Sansarc-Opal clays, 9 to 25 percent slopes	0.66	0.9%	VIIe	VIIe	21
SdF	Sully silt loam, 25 to 40 percent slopes	0.10	0.1%	VIIe		5
Weighted Average				2.05	*.	84.8

*c: Using Capabilities Class Dominant Condition Aggregation Method

*- Irr Class weighted average cannot be calculated on the current soils data due to missing data.

Soils data provided by USDA and NRCS.