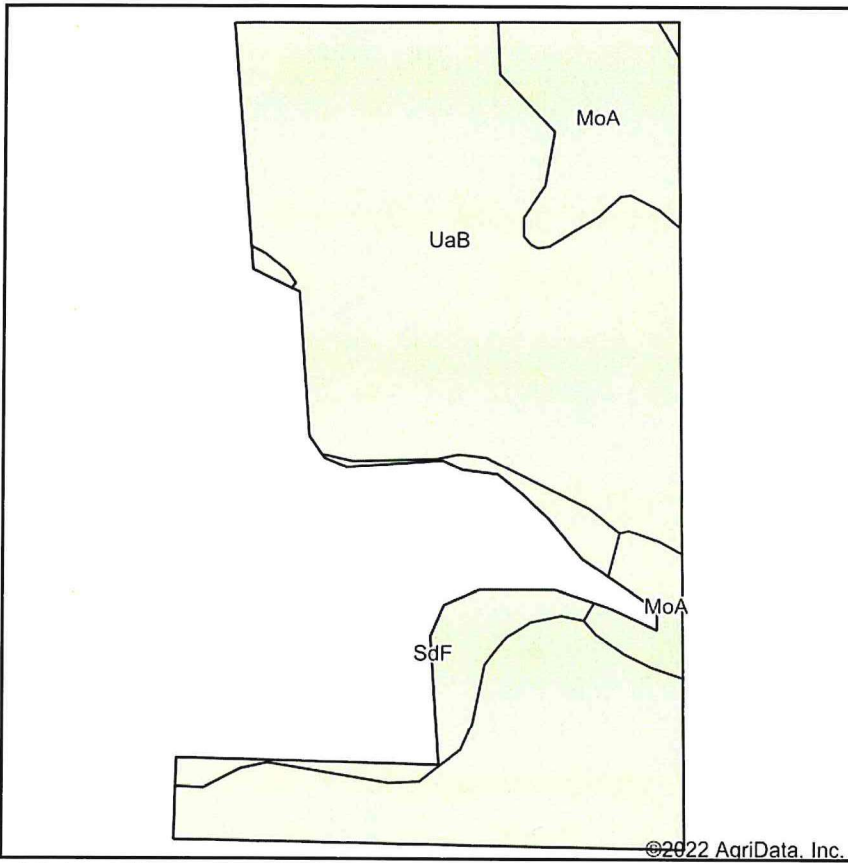
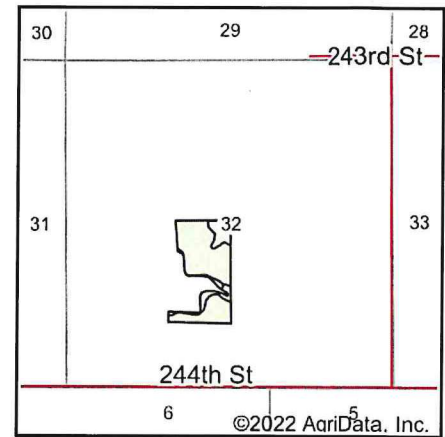


# Soils Map



Soils data provided by USDA and NRCS.



State: **South Dakota**  
 County: **Brule**  
 Location: **32-105N-70W**  
 Township: **West Point**  
 Acres: **25.39**  
 Date: **11/1/2022**

**ADVANTAGE**  
*Land Co.*

Maps Provided By:  
  
 CUSTOMIZED ONLINE MAPPING  
 © AgriData, Inc. 2021 www.AgriDataInc.com



Area Symbol: SD603, Soil Area Version: 25

Code	Soil Description	Acres	Percent of field	Non-Irr Class *c	Irr Class *c	Productivity Index
UaB	Uly silt loam, 2 to 6 percent slopes	20.05	79.0%	Ile	IIIe	84
MoA	Mobridge silt loam, 0 to 2 percent slopes	3.48	13.7%	IIc		94
SdF	Sully silt loam, 25 to 40 percent slopes	1.86	7.3%	VIIe		5
<b>Weighted Average</b>				<b>2.37</b>	<b>*-</b>	<b>79.6</b>

\*c: Using Capabilities Class Dominant Condition Aggregation Method

\*- Irr Class weighted average cannot be calculated on the current soils data due to missing data.

Soils data provided by USDA and NRCS.