



United States  
Department of  
Agriculture

## Roberts County, South Dakota



### Common Land Unit

- Non-Cropland
- Cropland

Tract Boundary  
PLSS

### Wetland Determination Identifiers

- Restricted Use
- Limited Restrictions
- Exempt from Conservation Compliance Provisions

2022 Program Year

Map Created March 22, 2022

Farm 9206

9-127N-52LW

United States Department of Agriculture (USDA) Farm Service Agency (FSA) maps are for FSA Program administration only. This map does not represent a legal survey or reflect actual ownership; rather it depicts the information provided directly from the producer and/or National Agricultural Imagery Program (NAIP) imagery. The producer accepts the data 'as is' and assumes all risks associated with its use. USDA-FSA assumes no responsibility for actual or consequential damage incurred as a result of any user's reliance on this data outside FSA Programs. Wetland identifiers do not represent the size, shape, or specific determination of the area. Refer to your original determination (CPA-026 and attached maps) for exact boundaries and determinations or contact USDA Natural Resources Conservation Service (NRCS).





United States  
Department of  
Agriculture

## Roberts County, South Dakota



### Common Land Unit

- Non-Cropland
- Cropland

- Tract Boundary
- PLSS

### Wetland Determination Identifiers

- Restricted Use
- Limited Restrictions
- Exempt from Conservation
- Compliance Provisions

2022 Program Year

Map Created March 22, 2022

Farm 9206

7-127N-51LW

United States Department of Agriculture (USDA) Farm Service Agency (FSA) maps are for FSA Program administration only. This map does not represent a legal survey or reflect actual ownership; rather it depicts the information provided directly from the producer and/or National Agricultural Imagery Program (NAIP) imagery. The producer accepts the data 'as is' and assumes all risks associated with its use. USDA-FSA assumes no responsibility for actual or consequential damage incurred as a result of any user's reliance on this data outside FSA Programs. Wetland identifiers do not represent the size, shape, or specific determination of the area. Refer to your original determination (CPA-026 and attached maps) for exact boundaries and determinations or contact USDA Natural Resources Conservation Service (NRCS).





United States  
Department of  
Agriculture

## Roberts County, South Dakota



**Common Land Unit**

Non-Cropland	Tract Boundary
Cropland	PLSS

### Wetland Determination Identifiers

- Restricted Use
- Limited Restrictions
- Exempt from Conservation Compliance Provisions

2022 Program Year

Map Created March 22, 2022

Farm 9206

8-127N-51LW

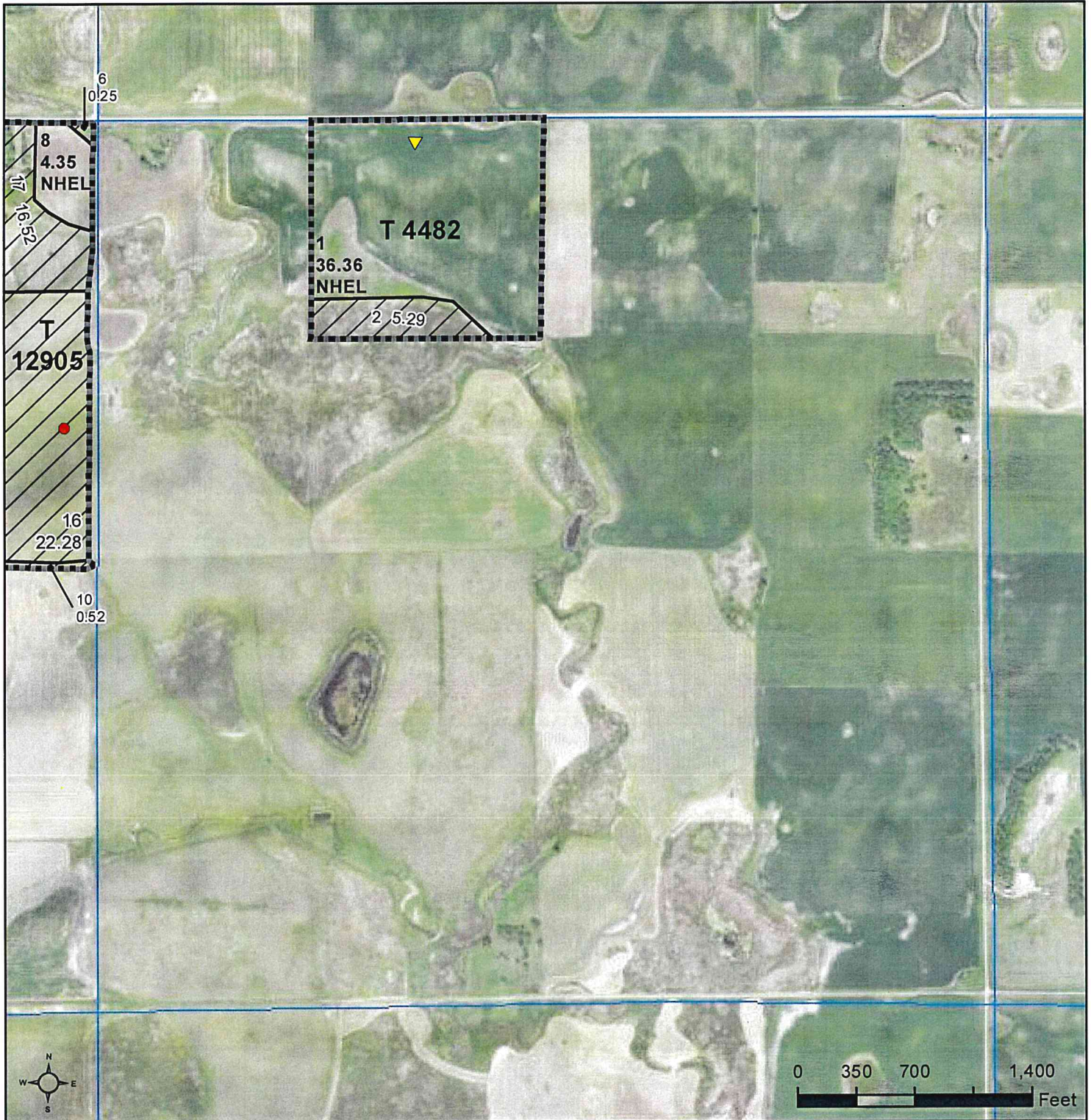
United States Department of Agriculture (USDA) Farm Service Agency (FSA) maps are for FSA Program administration only. This map does not represent a legal survey or reflect actual ownership; rather it depicts the information provided directly from the producer and/or National Agricultural Imagery Program (NAIP) imagery. The producer accepts the data 'as is' and assumes all risks associated with its use. USDA-FSA assumes no responsibility for actual or consequential damage incurred as a result of any user's reliance on this data outside FSA Programs. Wetland identifiers do not represent the size, shape, or specific determination of the area. Refer to your original determination (CPA-026 and attached maps) for exact boundaries and determinations or contact USDA Natural Resources Conservation Service (NRCS).





United States  
Department of  
Agriculture

## Roberts County, South Dakota



**Common Land Unit**

	Tract Boundary
	PLSS
	Non-Cropland
	Cropland

### Wetland Determination Identifiers

- Restricted Use
- Limited Restrictions
- Exempt from Conservation
- Compliance Provisions

United States Department of Agriculture (USDA) Farm Service Agency (FSA) maps are for FSA Program administration only. This map does not represent a legal survey or reflect actual ownership; rather it depicts the information provided directly from the producer and/or National Agricultural Imagery Program (NAIP) imagery. The producer accepts the data 'as is' and assumes all risks associated with its use. USDA-FSA assumes no responsibility for actual or consequential damage incurred as a result of any user's reliance on this data outside FSA Programs. Wetland identifiers do not represent the size, shape, or specific determination of the area. Refer to your original determination (CPA-026 and attached maps) for exact boundaries and determinations or contact USDA Natural Resources Conservation Service (NRCS).

**2022 Program Year**

Map Created March 22, 2022

**Farm 9206**

**10-127N-52LW**





United States  
Department of  
Agriculture

## Roberts County, South Dakota



Common Land Unit PLSS

  Cropland  
  Tract Boundary

### Wetland Determination Identifiers

- Restricted Use
- ▼ Limited Restrictions
- Exempt from Conservation
- Compliance Provisions

2022 Program Year

Map Created March 22, 2022

Farm **10558**

**10-127N-52LW**

United States Department of Agriculture (USDA) Farm Service Agency (FSA) maps are for FSA Program administration only. This map does not represent a legal survey or reflect actual ownership; rather it depicts the information provided directly from the producer and/or National Agricultural Imagery Program (NAIP) imagery. The producer accepts the data 'as is' and assumes all risks associated with its use. USDA-FSA assumes no responsibility for actual or consequential damage incurred as a result of any user's reliance on this data outside FSA Programs. Wetland identifiers do not represent the size, shape, or specific determination of the area. Refer to your original determination (CPA-026 and attached maps) for exact boundaries and determinations or contact USDA Natural Resources Conservation Service (NRCS).

South Dakota

Roberts

Report ID: FSA-156EZ

U.S. Department of Agriculture

Farm Service Agency

## Abbreviated 156 Farm Record

FARM: 9206

Prepared: 7/19/22 8:22 AM

Crop Year: 2022

Page: 6 of 6

DISCLAIMER: This is data extracted from the web farm database. Because of potential messaging failures in MIDAS, this data is not guaranteed to be an accurate and complete representation of data contained in the MIDAS system, which is the system of record for Farm Records.

Tract Number: 12905 Description NE-9-127-52

FSA Physical Location : Roberts, SD

ANSI Physical Location: Roberts, SD

BIA Range Unit Number:

HEL Status: NHEL: no agricultural commodity planted on undetermined fields

Recon Number

Wetland Status: Tract contains a wetland or farmed wetland

2017- 50

WL Violations: None

Farmland	Cropland	DCP Cropland	WBP	WRP	EWP	CRP Cropland	GRP
158.75	116.68	116.68	0.0	10.4	0.0	0.0	0.0
State Conservation	Other Conservation	Effective DCP Cropland	Double Cropped	MPL/FWP		Native Sod	
0.0	0.0	106.28	0.0	0.0		0.0	

Crop	Base Acreage	PLC Yield	CCC-505 CRP Reduction
WHEAT	27.34	59	0.00
OATS	2.16	109	0.00
CORN	31.12	131	0.00
SOYBEANS	41.16	43	0.00
Total Base Acres:	101.78		

Owners: FOSSUM, JOAN FRANCES

FOSSUM, JAY

Other Producers: None

South Dakota

Roberts

Report ID: FSA-156EZ

U.S. Department of Agriculture

Farm Service Agency

**Abbreviated 156 Farm Record**

**FARM: 9206**

Prepared: 7/19/22 8:22 AM

Crop Year: 2022

Page: 5 of 6

DISCLAIMER: This is data extracted from the web farm database. Because of potential messaging failures in MIDAS, this data is not guaranteed to be an accurate and complete representation of data contained in the MIDAS system, which is the system of record for Farm Records.

Tract Number: 12903      Description N2-Section 7-127-51

FSA Physical Location :    Roberts, SD                      ANSI Physical Location: Roberts, SD

BIA Range Unit Number:

HEL Status:    NHEL: no agricultural commodity planted on undetermined fields

Recon Number

Wetland Status:    Tract contains a wetland or farmed wetland

2017-    48

WL Violations:    None

<b>Farmland</b>	<b>Cropland</b>	<b>DCP Cropland</b>	<b>WBP</b>	<b>WRP</b>	<b>EWP</b>	<b>CRP Cropland</b>	<b>GRP</b>
310.63	234.93	234.93	0.0	0.0	0.0	0.0	0.0
<b>State Conservation</b>	<b>Other Conservation</b>	<b>Effective DCP Cropland</b>	<b>Double Cropped</b>	<b>MPL/FWP</b>	<b>Native Sod</b>		
0.0	0.0	234.93	0.0	0.0	0.0		

<b>Crop</b>	<b>Base Acreage</b>	<b>PLC Yield</b>	<b>CCC-505 CRP Reduction</b>
WHEAT	57.98	59	0.00
OATS	4.57	109	0.00
CORN	66.01	131	0.00
SOYBEANS	87.29	43	0.00
<b>Total Base Acres:</b>	215.85		

Owners: FOSSUM, JOAN FRANCES

FOSSUM, JAY

Other Producers:    None

South Dakota

Roberts

Report ID: FSA-156EZ

U.S. Department of Agriculture

Farm Service Agency

**Abbreviated 156 Farm Record**

**FARM: 9206**

Prepared: 7/19/22 8:22 AM

Crop Year: 2022

Page: 1 of 6

DISCLAIMER: This is data extracted from the web farm database. Because of potential messaging failures in MIDAS, this data is not guaranteed to be an accurate and complete representation of data contained in the MIDAS system, which is the system of record for Farm Records.

---

Tract Number: 2393      Description D18 W2NW 8 127 51

FSA Physical Location :      Roberts, SD      ANSI Physical Location: Roberts, SD

BIA Range Unit Number:

HEL Status:      NHEL: no agricultural commodity planted on undetermined fields

Wetland Status:      Tract contains a wetland or farmed wetland

WL Violations:      None

<b>Farmland</b>	<b>Cropland</b>	<b>DCP Cropland</b>	<b>WBP</b>	<b>WRP</b>	<b>EWP</b>	<b>CRP Cropland</b>	<b>GRP</b>
77.6	47.98	47.98	0.0	0.0	0.0	0.0	0.0
<b>State Conservation</b>	<b>Other Conservation</b>	<b>Effective DCP Cropland</b>	<b>Double Cropped</b>	<b>MPL/FWP</b>	<b>Native Sod</b>		
0.0	0.0	47.98	0.0	0.0	0.0		

<b>Crop</b>	<b>Base Acreage</b>	<b>PLC Yield</b>	<b>CCC-505 CRP Reduction</b>
WHEAT	12.34	59	0.00
OATS	0.97	109	0.00
CORN	14.05	131	0.00
SOYBEANS	18.58	43	0.00
<b>Total Base Acres:</b>	45.94		

Owners: FOSSUM, JOAN FRANCES

FOSSUM, JAY

Other Producers:      None



South Dakota

Roberts

Report ID: FSA-156EZ

U.S. Department of Agriculture

Farm Service Agency

**Abbreviated 156 Farm Record**

**FARM: 9206**

Prepared: 7/19/22 8:22 AM

Crop Year: 2022

Page: 4 of 6

DISCLAIMER: This is data extracted from the web farm database. Because of potential messaging failures in MIDAS, this data is not guaranteed to be an accurate and complete representation of data contained in the MIDAS system, which is the system of record for Farm Records.

Tract Number: 4482      Description B18 NENW 10 127 52

FSA Physical Location :    Roberts, SD                      ANSI Physical Location: Roberts, SD

BIA Range Unit Number:

HEL Status:    NHEL: no agricultural commodity planted on undetermined fields

Wetland Status:    Tract contains a wetland or farmed wetland

WL Violations:    None

<b>Farmland</b>	<b>Cropland</b>	<b>DCP Cropland</b>	<b>WBP</b>	<b>WRP</b>	<b>EWP</b>	<b>CRP Cropland</b>	<b>GRP</b>
41.65	36.36	36.36	0.0	0.0	0.0	0.0	0.0
<b>State Conservation</b>	<b>Other Conservation</b>	<b>Effective DCP Cropland</b>	<b>Double Cropped</b>	<b>MPL/FWP</b>	<b>Native Sod</b>		
0.0	0.0	36.36	0.0	0.0	0.0		

<b>Crop</b>	<b>Base Acreage</b>	<b>PLC Yield</b>	<b>CCC-505 CRP Reduction</b>
WHEAT	9.35	59	0.00
OATS	0.74	109	0.00
CORN	10.65	131	0.00
SOYBEANS	14.08	43	0.00
<b>Total Base Acres:</b>	34.82		

Owners: FOSSUM, JAY

HARTMANN, JODI

Other Producers:    None



South Dakota

Roberts

Report ID: FSA-156EZ

U.S. Department of Agriculture

Farm Service Agency

**Abbreviated 156 Farm Record**

**FARM: 10558**

Prepared: 8/9/22 7:50 AM

Crop Year: 2022

Page: 1 of 2

DISCLAIMER: This is data extracted from the web farm database. Because of potential messaging failures in MIDAS, this data is not guaranteed to be an accurate and complete representation of data contained in the MIDAS system, which is the system of record for Farm Records.

Tract Number: 11837 Description NWNE 10 127 52

FSA Physical Location : Roberts, SD

ANSI Physical Location: Roberts, SD

BIA Range Unit Number:

HEL Status: NHEL: no agricultural commodity planted on undetermined fields

Recon Number

Wetland Status: Tract contains a wetland or farmed wetland

2008- 6

WL Violations: None

Farmland	Cropland	DCP Cropland	WBP	WRP	EWP	CRP Cropland	GRP
38.5	38.5	38.5	0.0	0.0	0.0	0.0	0.0
State Conservation	Other Conservation	Effective DCP Cropland	Double Cropped	MPL/FWP		Native Sod	
0.0	0.0	38.5	0.0	0.0		0.0	

Crop	Base Acreage	PLC Yield	CCC-505 CRP Reduction
WHEAT	8.42	64	0.00
CORN	9.67	139	0.00
SOYBEANS	20.41	33	0.00

Total Base Acres: 38.5

Owners: FOSSUM, JAY

Other Producers: None