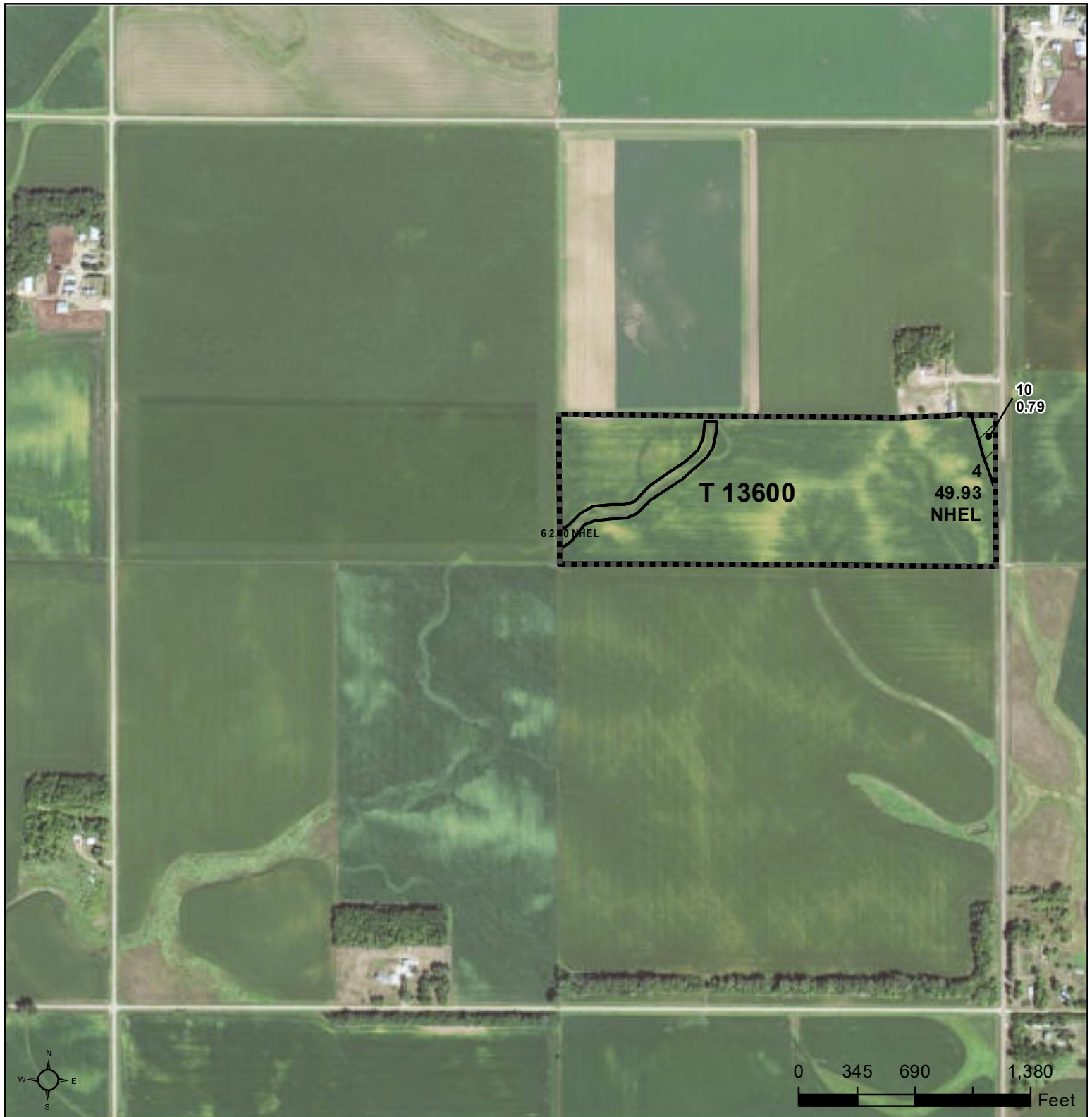







United States
Department of
Agriculture

Moody County, South Dakota



Common Land Unit  Tract Boundary
 Non-Cropland
 Cropland

Wetland Determination Identifiers

-  Restricted Use
-  Limited Restrictions
-  Exempt from Conservation Compliance Provisions

Unless otherwise noted,
crops listed below are:
Non-irrigated
Intended for Grain
Corn = Yellow
Soybeans = Common
Wheat - HRS or HRW
Sunflowers = Oil or Non-oil

Producer initial _____
Date _____

Tract Cropland Total: 52.03 acres

2022 Program Year

Map Created May 11, 2022

Farm **6027**
Tract **13600**

36-107N-49W-Moody

United States Department of Agriculture (USDA) Farm Service Agency (FSA) maps are for FSA Program administration only. This map does not represent a legal survey or reflect actual ownership; rather it depicts the information provided directly from the producer and/or National Agricultural Imagery Program (NAIP) imagery. The producer accepts the data 'as is' and assumes all risks associated with its use. USDA-FSA assumes no responsibility for actual or consequential damage incurred as a result of any user's reliance on this data outside FSA Programs. Wetland identifiers do not represent the size, shape, or specific determination of the area. Refer to your original determination (CPA-026 and attached maps) for exact boundaries and determinations or contact USDA Natural Resources Conservation Service (NRCS).