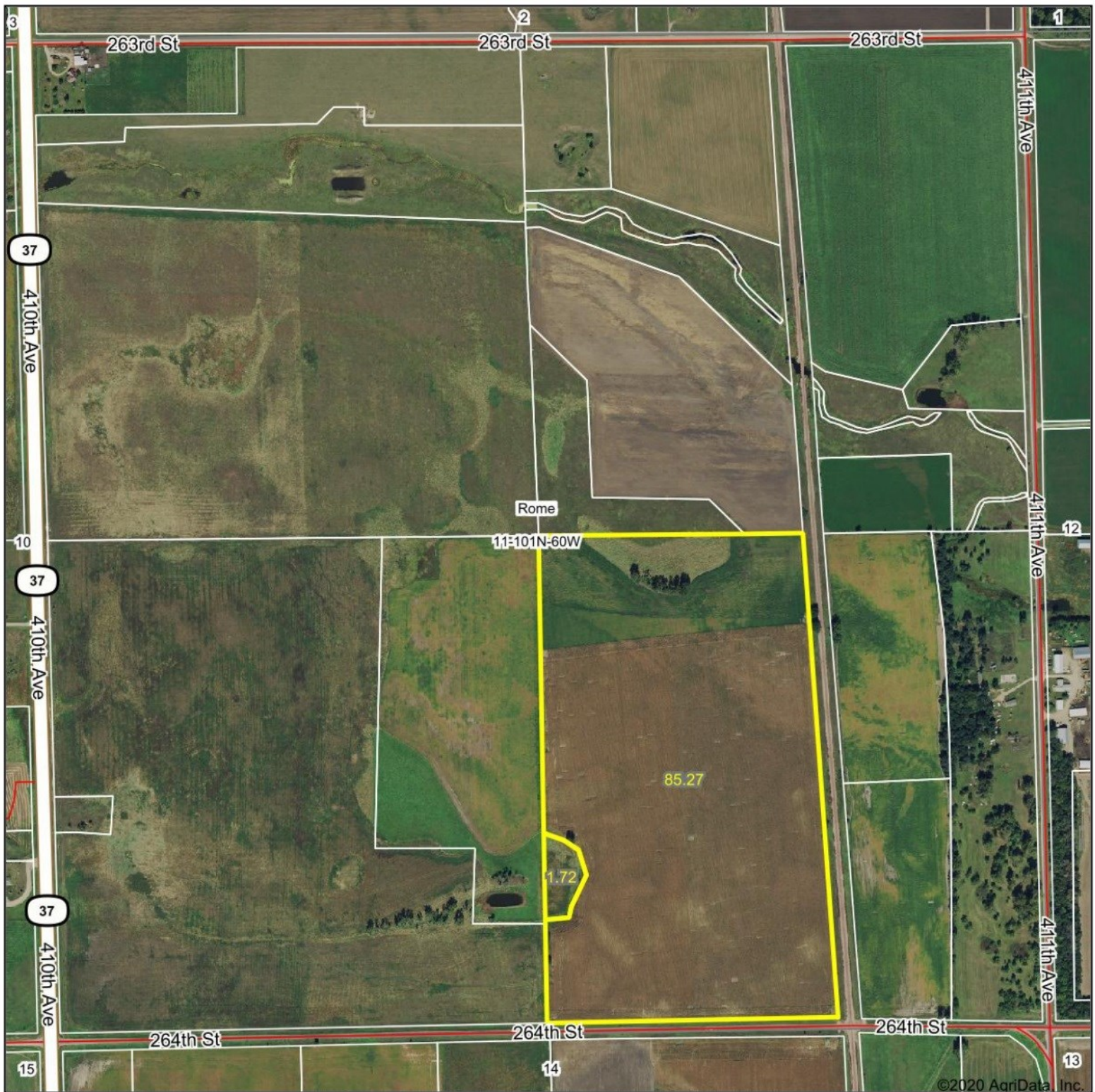


Aerial Map



ADVANTAGE
Land Co.

Map Center: 43° 33' 51.24, -97° 59' 43.73

0ft 822ft 1645ft

11-101N-60W
Davison County
South Dakota

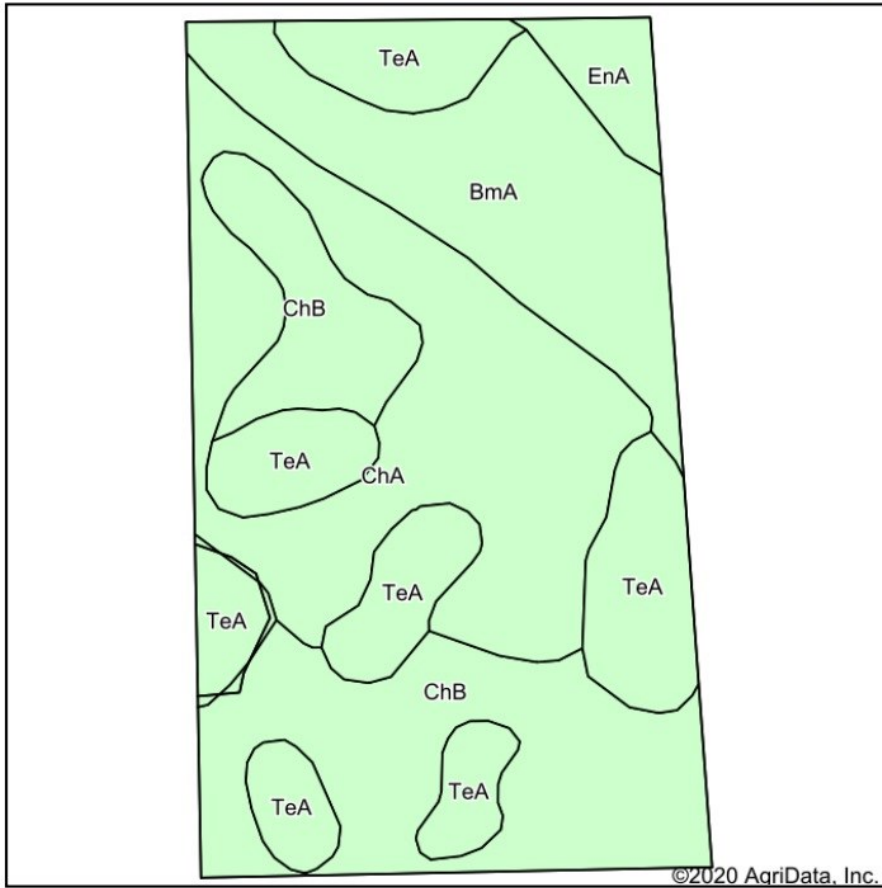


9/23/2020

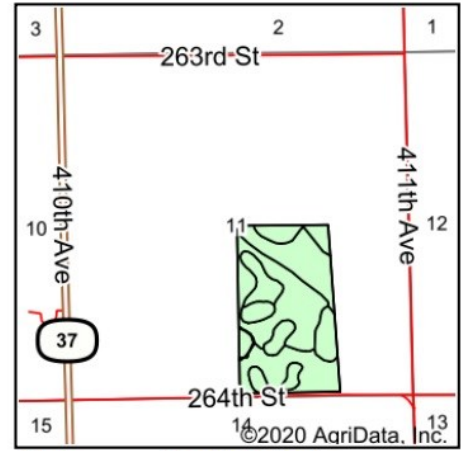
Maps Provided By:
 **surety**
CUSTOMIZED ONLINE MAPPING
© AgriData, Inc. 2020 www.AgriDataInc.com

Field borders provided by Farm Service Agency as of 5/21/2008.

Soils Map



Soils data provided by USDA and NRCS.



State: **South Dakota**
 County: **Davison**
 Location: **11-101N-60W**
 Township: **Rome**
 Acres: **86.99**
 Date: **9/23/2020**

ADVANTAGE
Land Co.

Maps Provided By:



Area Symbol: SD035, Soil Area Version: 23

| Code | Soil Description | Acres | Percent of field | Non-Irr Class *c | Productivity Index |
|-------------------------|---|-------|------------------|------------------|--------------------|
| ChA | Clarno-Bonilla loams, 0 to 2 percent slopes | 24.61 | 28.3% | IIc | 88 |
| ChB | Clarno-Ethan-Bonilla loams, 1 to 6 percent slopes | 23.94 | 27.5% | IIe | 78 |
| TeA | Tetonka silt loam, 0 to 1 percent slopes | 20.00 | 23.0% | IVw | 56 |
| BmA | Blendon sandy loam, 0 to 3 percent slopes | 15.95 | 18.3% | IIIe | 63 |
| EnA | Enet loam, 0 to 2 percent slopes | 2.49 | 2.9% | IIIs | 60 |
| Weighted Average | | | | | 72.5 |

*c: Using Capabilities Class Dominant Condition Aggregation Method