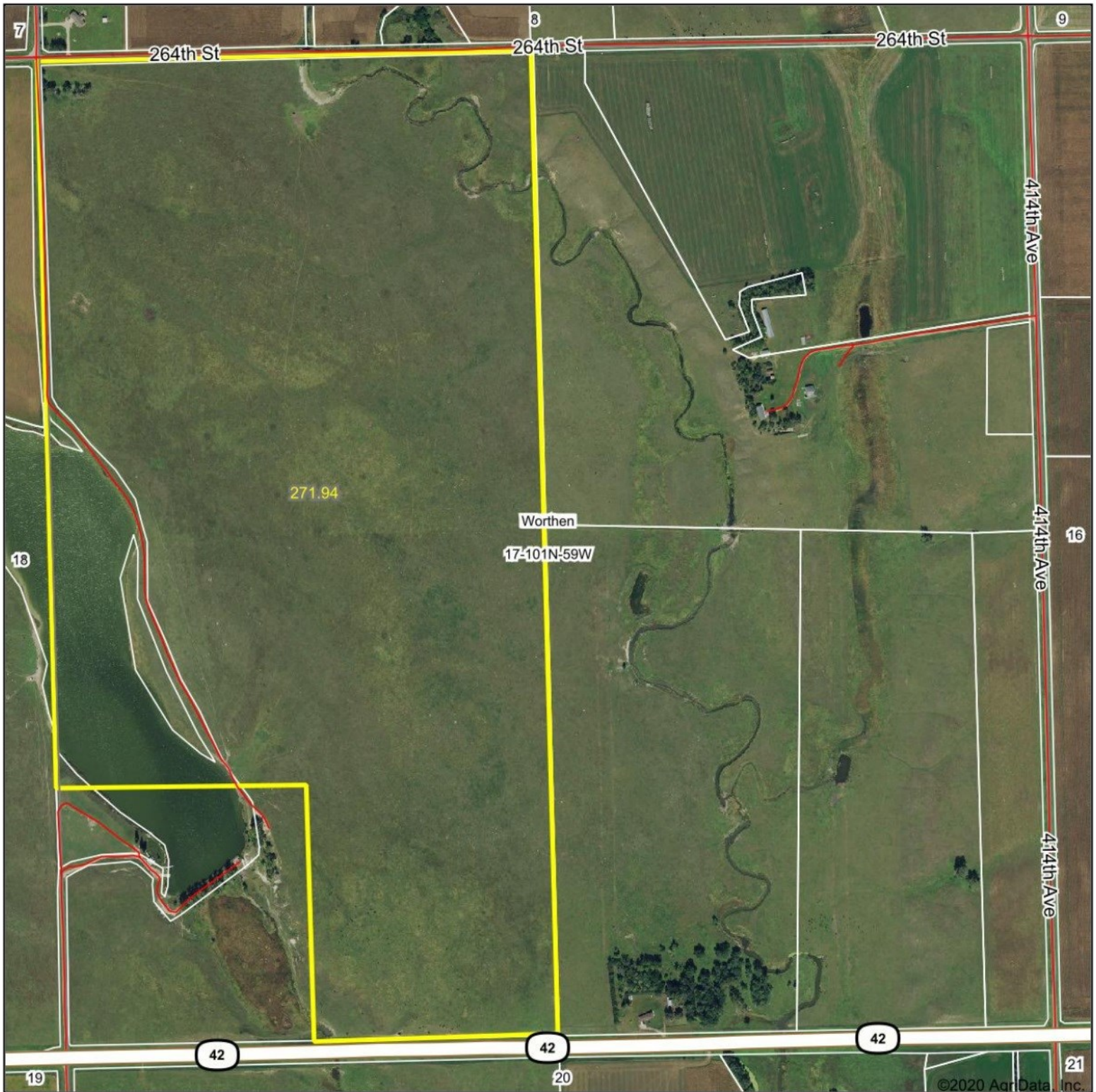


Aerial Map



ADVANTAGE
Land Co.

Maps Provided By:



surety
CUSTOMIZED ONLINE MAPPING

© AgriData, Inc. 2020

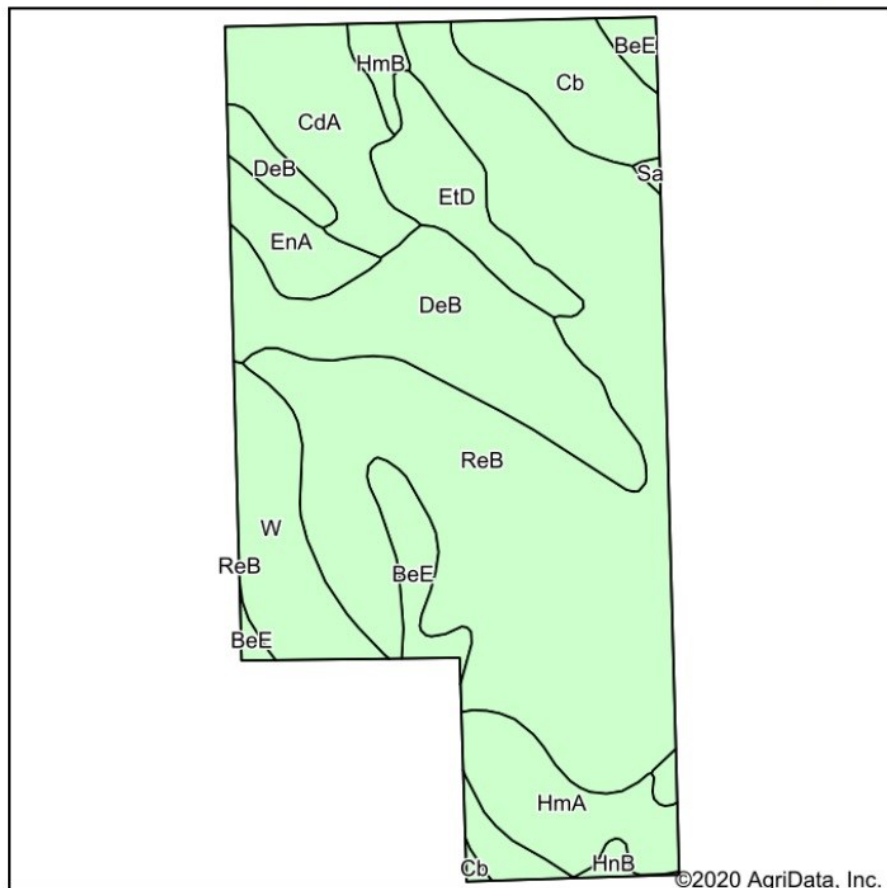
www.AgrDataInc.com

Map Center: 43° 32' 59.8, -97° 56' 9.66

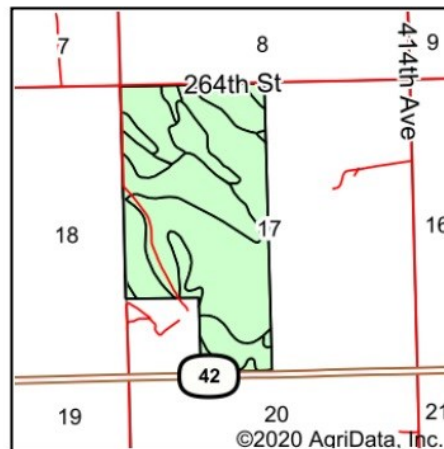
17-101N-59W
Hanson County
South Dakota

Field borders provided by Farm Service Agency as of 5/21/2008.

Soils Map



Soils data provided by USDA and NRCS.



State: **South Dakota**
 County: **Hanson**
 Location: **17-101N-59W**
 Township: **Worthen**
 Acres: **271.94**
 Date: **9/23/2020**

ADVANTAGE
Land Co.

Maps Provided By:



Area Symbol: SD602, Soil Area Version: 22

Code	Soil Description	Acres	Percent of field	Non-Irr Class *c	Productivity Index
ReB	Redstoe silt loam, 0 to 6 percent slopes	121.94	44.8%	IIIe	43
DeB	Delmont loam, 2 to 6 percent slopes	39.84	14.7%	IVe	39
CdA	Clarno-Bonilla loams, 0 to 2 percent slopes	19.96	7.3%	IIc	88
W	Water	17.83	6.6%	VIII	0
HmA	Henkin fine sandy loam, 0 to 2 percent slopes	16.27	6.0%	IIIe	58
Cb	Bon loam, channeled, 0 to 2 percent slopes, frequently flooded	15.47	5.7%	VIw	34
EtD	Ethan-Betts loams, 9 to 15 percent slopes	13.68	5.0%	VIe	30
BeE	Betts-Ethan loams, 15 to 40 percent slopes	13.29	4.9%	VIIe	18
EnA	Enet loam, 0 to 2 percent slopes	8.12	3.0%	IIIs	60
HmB	Henkin fine sandy loam, 2 to 6 percent slopes	3.07	1.1%	IIIe	55
HnB	Alwilda fine sandy loam, 0 to 6 percent slopes	1.99	0.7%	IIIe	32
Sa	Salmo silty clay loam	0.48	0.2%	IVw	32
Weighted Average					42

*c: Using Capabilities Class Dominant Condition Aggregation Method

Soils data provided by USDA and NRCS.