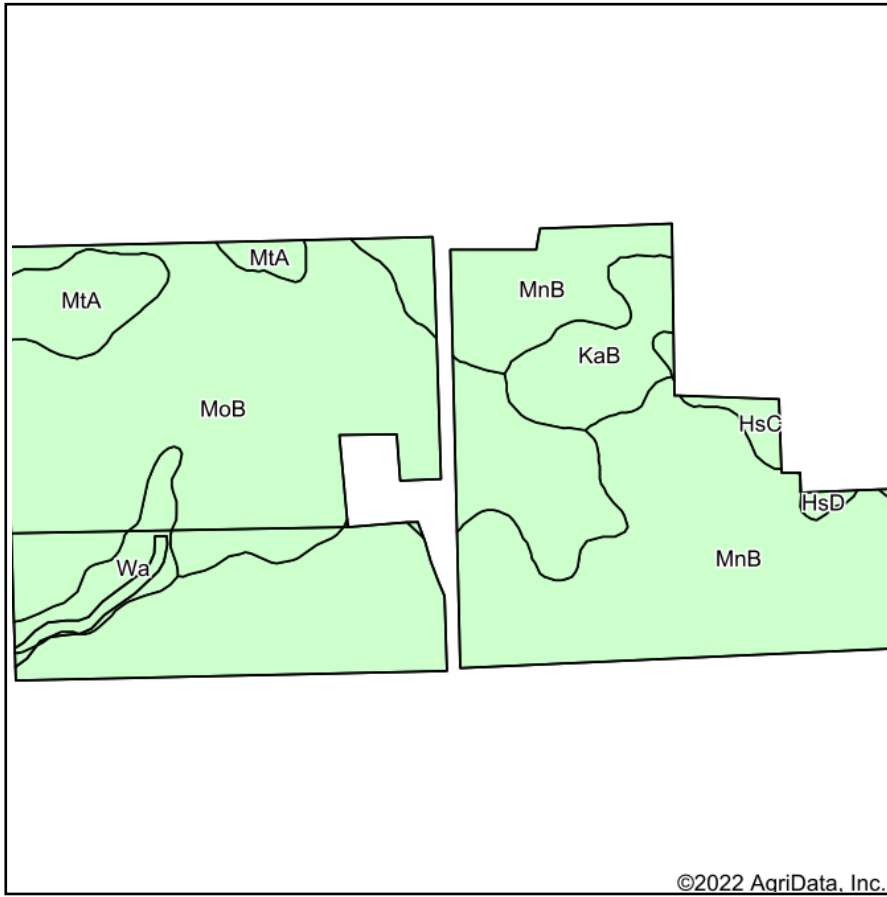
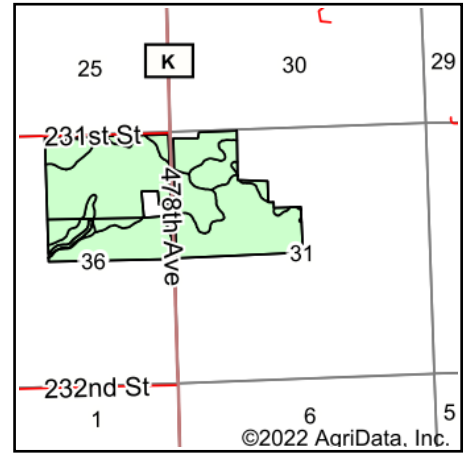


Soils Map



Soils data provided by USDA and NRCS.



State: **South Dakota**
 County: **Moody**
 Location: **31-107N-48W**
 Township: **Flandreau**
 Acres: **266.31**
 Date: **9/9/2022**

ADVANTAGE
Land Co.

Maps Provided By:



Area Symbol: SD101, Soil Area Version: 25

Code	Soil Description	Acres	Percent of field	Non-Irr Class *c	Irr Class *c	Productivity Index
MnB	Moody-Nora complex, 2 to 6 percent slopes	120.97	45.4%	Ile	IIIe	88
MoB	Moody silty clay loam, cool, 2 to 6 percent slopes	106.57	40.0%	Ile		87
KaB	Kranzburg-Brookings silty clay loams, 1 to 6 percent slopes	13.89	5.2%	Ile		87
MtA	Moody-Trent complex, 0 to 2 percent slopes	12.36	4.6%	I	I	95
Wa	Wakonda-Chancellor complex, 0 to 2 percent slopes	8.60	3.2%	IIs		83
HsC	Houdek-Shindler clay loams, 5 to 9 percent slopes	2.89	1.1%	IIIe		63
HsD	Houdek-Shindler clay loams, 6 to 25 percent slopes	1.03	0.4%	IVe		41
Weighted Average				1.97	*-	87.3

*c: Using Capabilities Class Dominant Condition Aggregation Method

*- Irr Class weighted average cannot be calculated on the current soils data due to missing data.

Soils data provided by USDA and NRCS.