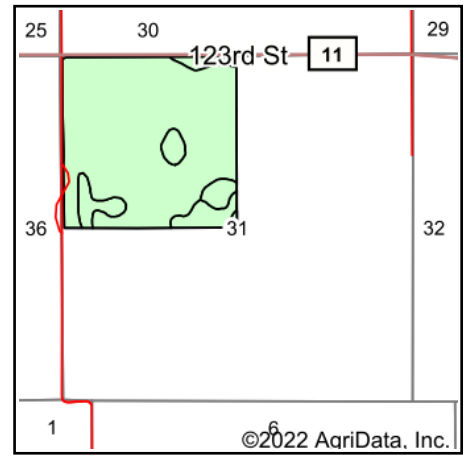
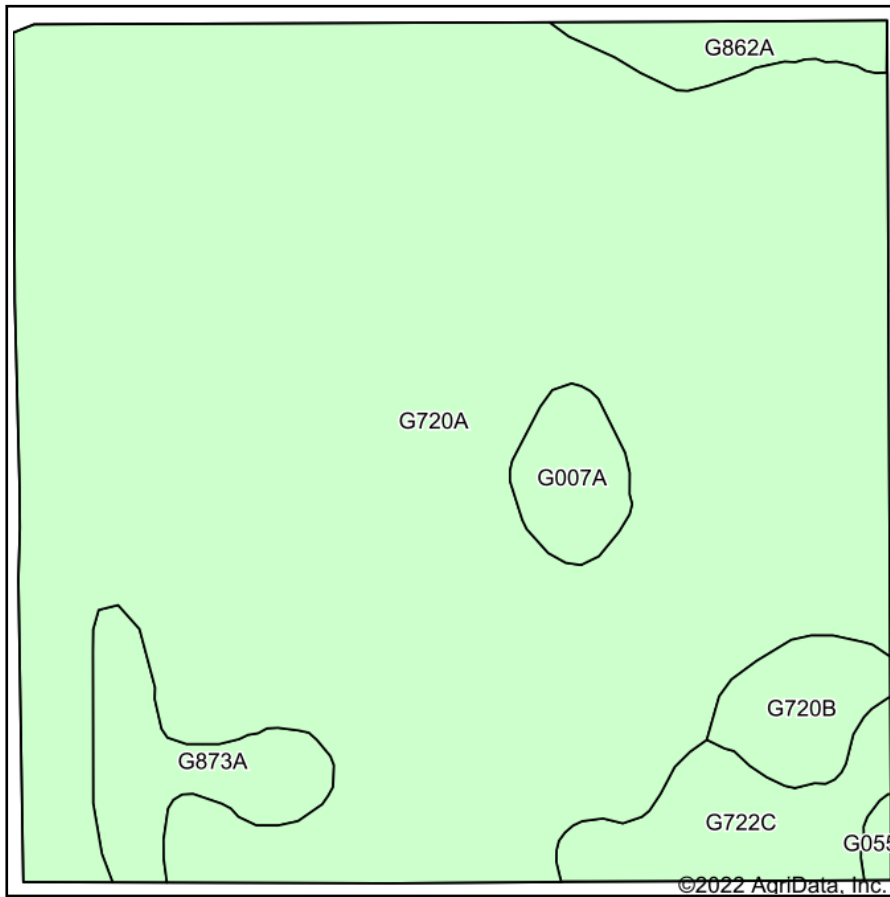


Soils Map



State: **South Dakota**
 County: **Brown**
 Location: **31-125N-62W**
 Township: **Columbia**
 Acres: **156.99**
 Date: **7/13/2022**

ADVANTAGE
Land Co.

Maps Provided By:

 CUSTOMIZED ONLINE MAPPING
 © AgriData, Inc. 2021 www.AgriDataInc.com



Area Symbol: SD013, Soil Area Version: 27

Code	Soil Description	Acres	Percent of field	Non-Irr Class *c	Productivity Index
G720A	Great Bend-Beotia silt loams, 0 to 2 percent slopes	133.23	84.9%	IIc	95
G722C	Great Bend-Zell silt loams, 6 to 9 percent slopes	6.78	4.3%	IIIe	66
G873A	Beotia-Winship silt loams, 0 to 2 percent slopes	6.11	3.9%	IIc	93
G720B	Great Bend-Beotia silt loams, 2 to 6 percent slopes	3.98	2.5%	Ile	88
G007A	Tonka silt loam, silty substratum, 0 to 1 percent slopes	3.28	2.1%	IVw	43
G862A	Harmony-Beotia silt loams, 0 to 2 percent slopes	3.17	2.0%	IIIs	92
G055A	Ludden silty clay, 0 to 1 percent slopes, frequently flooded	0.44	0.3%	VIw	52
Weighted Average				2.10	92.2

*c: Using Capabilities Class Dominant Condition Aggregation Method
 Soils data provided by USDA and NRCS.