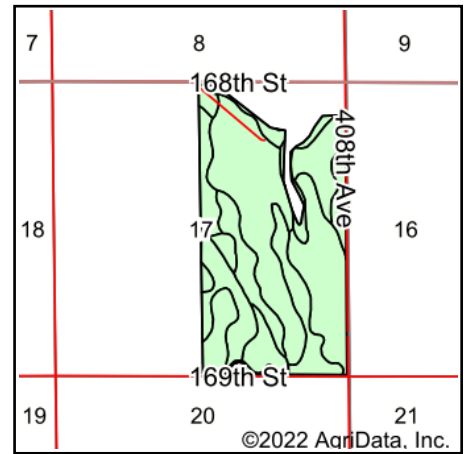
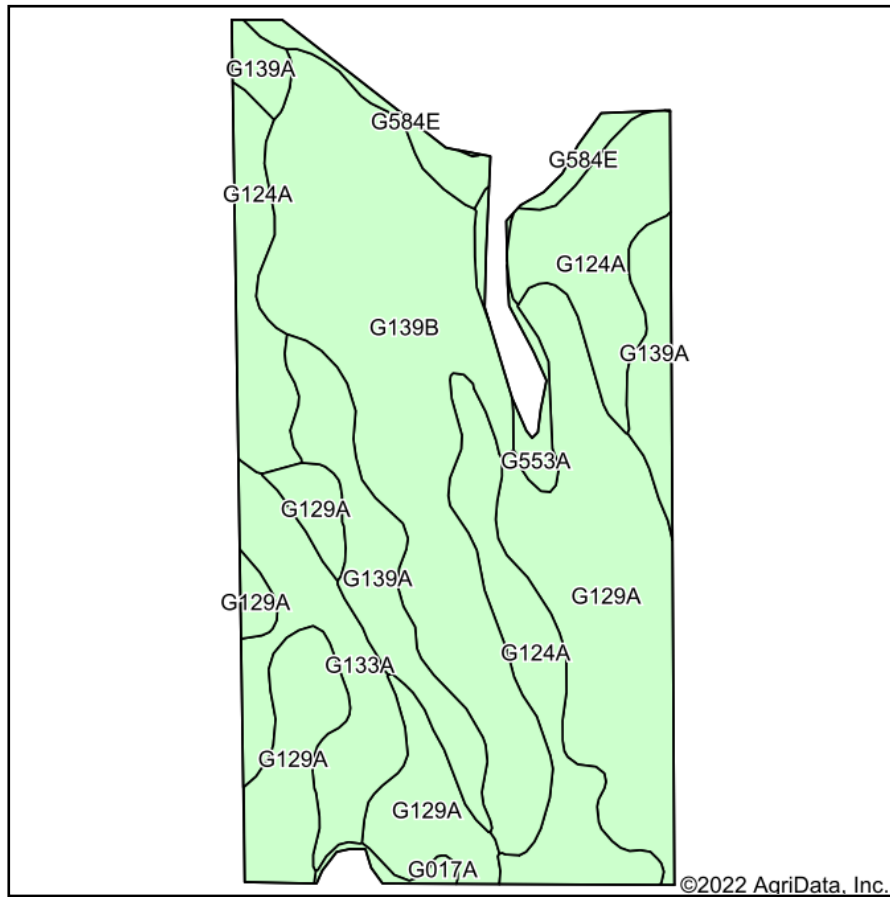


# Soils Map



State: **South Dakota**  
 County: **Spink**  
 Location: **17-117N-60W**  
 Township: **Spring**  
 Acres: **273.27**  
 Date: **6/2/2022**

**ADVANTAGE**  
*Land Co.*

Maps Provided By:  
  
 CUSTOMIZED ONLINE MAPPING  
 © AgriData, Inc. 2021 www.AgriDataInc.com



Area Symbol: SD115, Soil Area Version: 22

Code	Soil Description	Acres	Percent of field	Non-Irr Class *c	Productivity Index
G129A	Cavour-Ferney loams, 0 to 3 percent slopes	77.66	28.4%	IVs	35
G139B	Forman-Cresbard loams, 3 to 6 percent slopes	76.45	28.0%	Ile	76
G124A	Cresbard-Cavour loams, 0 to 3 percent slopes	54.13	19.8%	IIIs	58
G139A	Forman-Cresbard loams, 0 to 3 percent slopes	29.86	10.9%	IIc	79
G133A	Ferney-Heil, till substratum complex, 0 to 3 percent slopes	22.69	8.3%	VIIs	18
G584E	Edgeley-Buse loams, 9 to 25 percent slopes	7.05	2.6%	VIe	24
G553A	Ranslo-Harriet loams, 0 to 2 percent slopes, occasionally flooded	3.98	1.5%	IVs	27
G017A	Heil silt loam, till substratum, 0 to 1 percent slopes	1.45	0.5%	VIIs	11
<b>Weighted Average</b>				<b>3.25</b>	<b>53.9</b>

\*c: Using Capabilities Class Dominant Condition Aggregation Method  
 Soils data provided by USDA and NRCS.