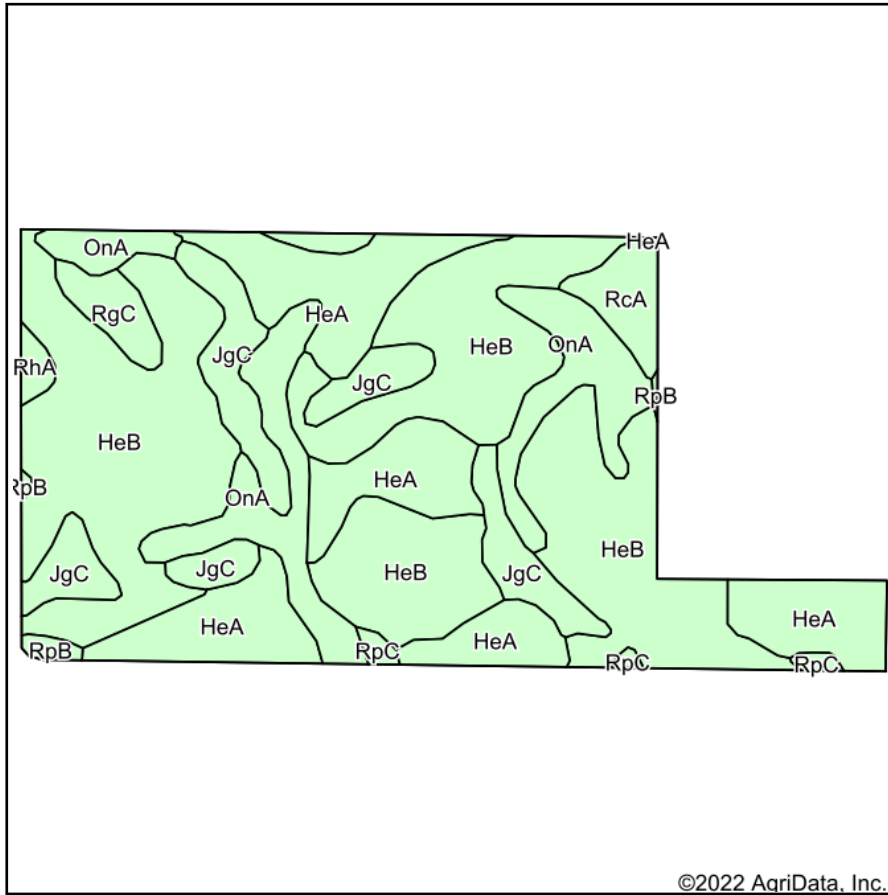
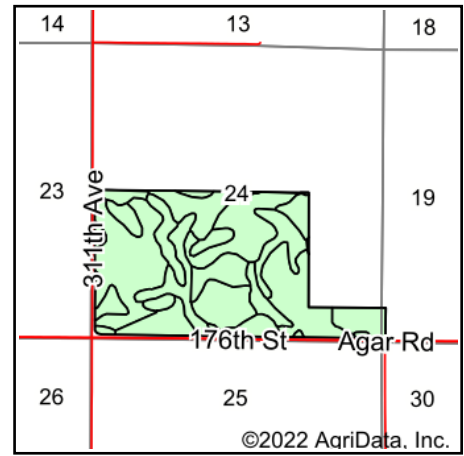


Soils Map



Soils data provided by USDA and NRCS.



State: **South Dakota**
 County: **Sully**
 Location: **24-116N-76W**
 Township: **East Sully**
 Acres: **246.59**
 Date: **8/5/2022**

ADVANTAGE
Land Co.

Maps Provided By:



Area Symbol: SD119, Soil Area Version: 24

Code	Soil Description	Acres	Percent of field	Non-Irr Class *c	Productivity Index
HeB	Highmore silt loam, 2 to 6 percent slopes	120.40	48.8%	Ile	91
HeA	Highmore silt loam, 0 to 2 percent slopes	53.82	21.8%	IIc	92
OnA	Mobridge silt loam, 0 to 2 percent slopes	31.13	12.6%	IIc	94
JgC	Java-Glenham loams, 3 to 9 percent slopes	25.99	10.5%	IVe	63
RcA	Raber-Cavo loams, 0 to 2 percent slopes	5.80	2.4%	IIc	60
RgC	Raber-Eakin complex, 6 to 9 percent slopes	4.74	1.9%	IIIe	61
RpC	Raber-Peno loams, 6 to 9 percent slopes	1.81	0.7%	IIIe	52
RhA	Eakin-Raber complex, 0 to 2 percent slopes	1.54	0.6%	IIc	83
RpB	Raber-Peno loams, 2 to 6 percent slopes	1.36	0.6%	Ile	65
Weighted Average				2.24	86.9

*c: Using Capabilities Class Dominant Condition Aggregation Method
 Soils data provided by USDA and NRCS.