



SOUTH DAKOTA DEPARTMENT OF GAME, FISH AND PARKS

909 LAKE FRONT DRIVE | MOBRIDGE, SD 57601-0099

August 8, 2022

To Whom it may Concern:

Regarding the Matt Witler property for sale and any isolated tract where there is not access except through State lands owned and operated by the South Dakota Department of Game, Fish and Parks, we the Department will grant an ingress and egress easement for access to private property. Any easement that will be given will show a defined and most direct and effective path and would allow for vehicle and/or equipment passage to operate the land. Any future deviation caused by unforeseen circumstances from the easement path will require permission from a department representative as to limit disturbance to the public land. Furthermore, the easement may allow for improvements on the easement, but the department shall not incur any monetary costs unless it is determined as a direct benefit to the public.

The private property in 116N 76W S24 and 116N 75W S19,20 shown as tracts 1,2, and 3 on the map are enrolled in the Game, Fish and Park Department Walk In Area program which allows public access for hunting on private land. Upon the sale of any or all the tracts the contract will be cancelled. The new landowner will have the chance to re-enroll the property into the program should they wish but are not obligated to participate in the program. Before close of the property sale, the white "Walk In Area" signs will be changed to the red "Not a Walk In Area" signs should the new landowner not wish to enroll the property in the program.

If you have any further concerns, please contact me.

Respectfully,

Kevin Hoffmann

Kevin Hoffmann

Kevin Hoffmann | *Habitat Program Manager*

South Dakota Game, Fish and Parks

P.O. Box 99 | Mobridge, SD 57601

605.877.6354 | Kevin.Hoffmann@state.sd.us

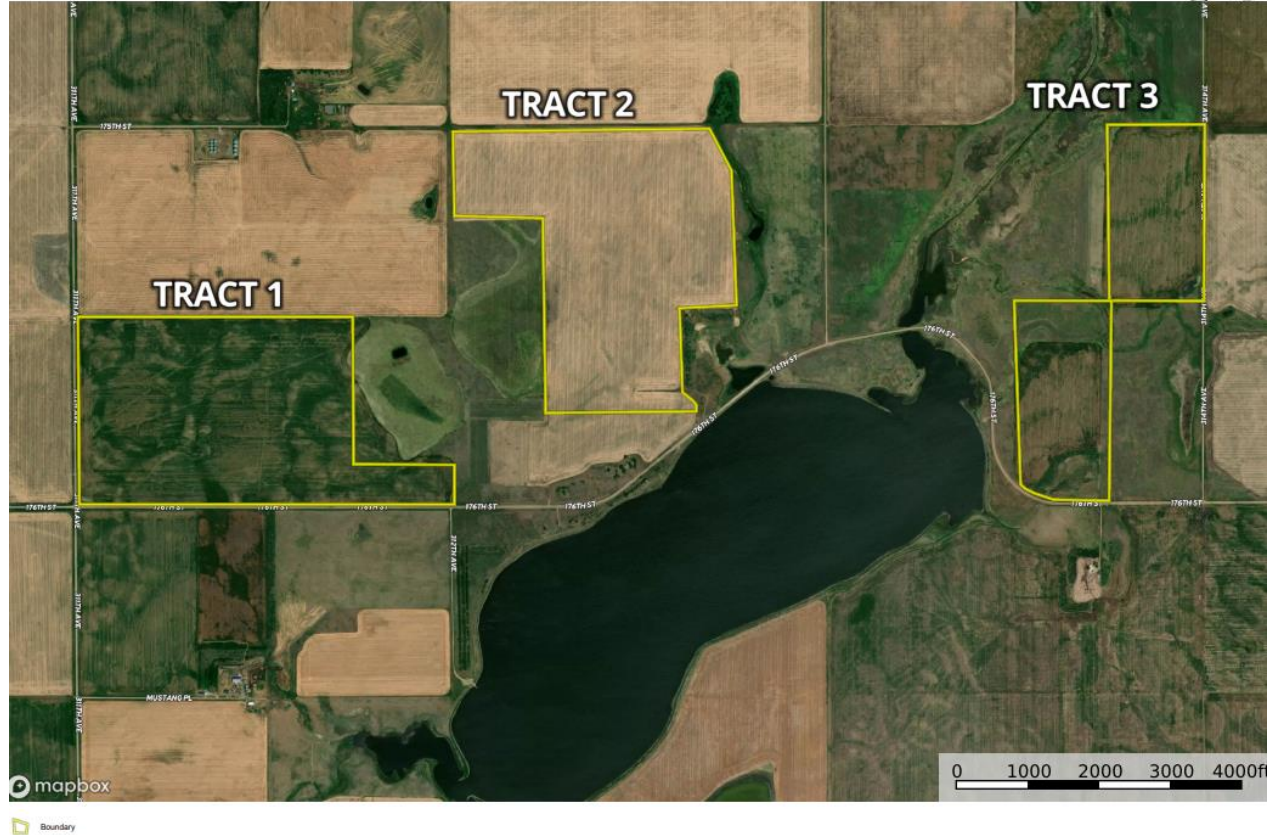


SOUTH DAKOTA DEPARTMENT OF GAME, FISH AND PARKS

909 LAKE FRONT DRIVE | MOBRIDGE, SD 57601-0099

Sully Co - Matt Wittler
South Dakota, AC +/-

ADVANTAGE
Land Co



Jackson Hegerfeld
P: 6056922525 jackson@advantagelandco.com 517 6th Street, Brookings, SD 57006

M The information contained herein was obtained from sources deemed to be reliable. MapRight Services makes no warranties or guarantees as to completeness or accuracy thereof.