

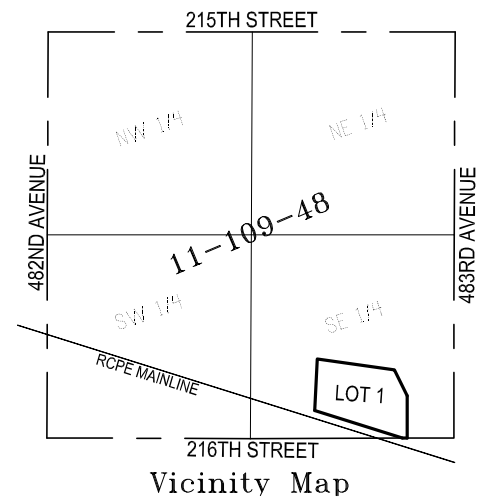
# PLAT OF

## LOT 1 OF GEBHART ADDITION, IN THE SE 1/4 SECTION 11, T109N, R48W OF THE 5<sup>TH</sup> P.M., BROOKINGS COUNTY, SOUTH DAKOTA.



- October, 2016
- Scale: 1"=200'
- Monument Recovered
- △ Computed Corner
- Monument Set (5/8" x 18" Capped Rebar) No. 6575

NOTE: Bearing are Based on Assumed Datum



### SURVEYOR'S CERTIFICATE

I, Mike J. Lapka, a Registered Land Surveyor of the State of South Dakota, do hereby certify that I did on or before October 5th, 2016, survey a parcel of land located in the SE 1/4 of Section 11, T109N, R48W of the 5th P.M., Brookings County, South Dakota, as shown on the plat, and marked upon the ground thereof in the manner shown on the plat and that the attached is a true and correct representation of said survey and that the parcel of land so platted contains: "PLAT OF LOT 1 OF GEBHART ADDITION, IN THE SE 1/4 SECTION 11, T109N, R48W OF THE 5<sup>TH</sup> P.M., BROOKINGS COUNTY, SOUTH DAKOTA".

IN WITNESS WHEREOF, I have executed the Surveyor's Certificate this 5th day of October, 2016.

Prepared By:



Civil Engineers & Land Surveyors  
Brookings, South Dakota  
Ph. 605-696-3200

