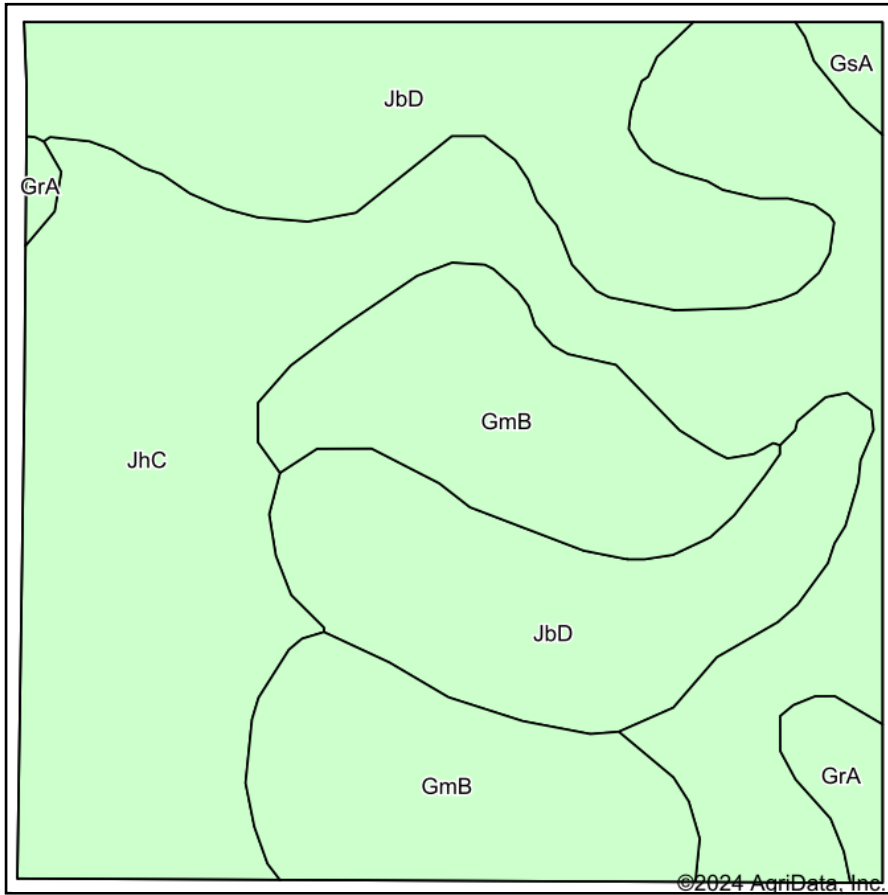
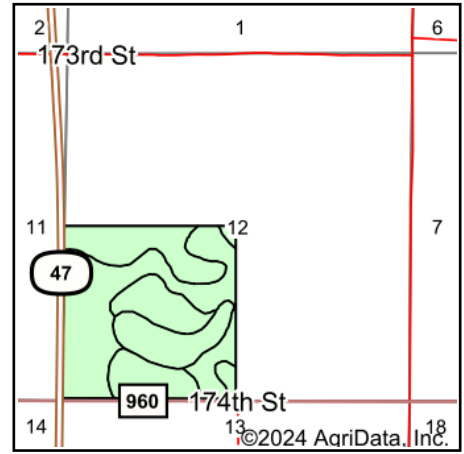


# Soils Map



Soils data provided by USDA and NRCS.



State: **South Dakota**  
 County: **Hyde**  
 Location: **12-116N-72W**  
 Township: **North Hyde**  
 Acres: **158**  
 Date: **3/6/2024**

**ADVANTAGE**  
*Land Co.*

Maps Provided By:  
  
 CUSTOMIZED ONLINE MAPPING  
 © AgriData, Inc. 2023 www.AgriDataInc.com



Area Symbol: SD069, Soil Area Version: 27

Code	Soil Description	Acres	Percent of field	Non-Irr Class *c	Productivity Index
JhC	Java-Glenham-Prosper loams, 1 to 9 percent slopes	70.78	44.8%	IVe	61
JbD	Java-Betts loams, 6 to 15 percent slopes	48.93	31.0%	Vle	31
GmB	Glenham-Java-Prosper loams, 1 to 6 percent slopes	33.80	21.4%	Ile	77
GrA	Glenham-Prosper loams, 0 to 2 percent slopes	3.27	2.1%	IIc	86
GsA	Glenham-Prosper-Hoven complex, 0 to 4 percent slopes	1.22	0.8%	Ile	68
Weighted Average				4.13	55.7

\*c: Using Capabilities Class Dominant Condition Aggregation Method

Soils data provided by USDA and NRCS.