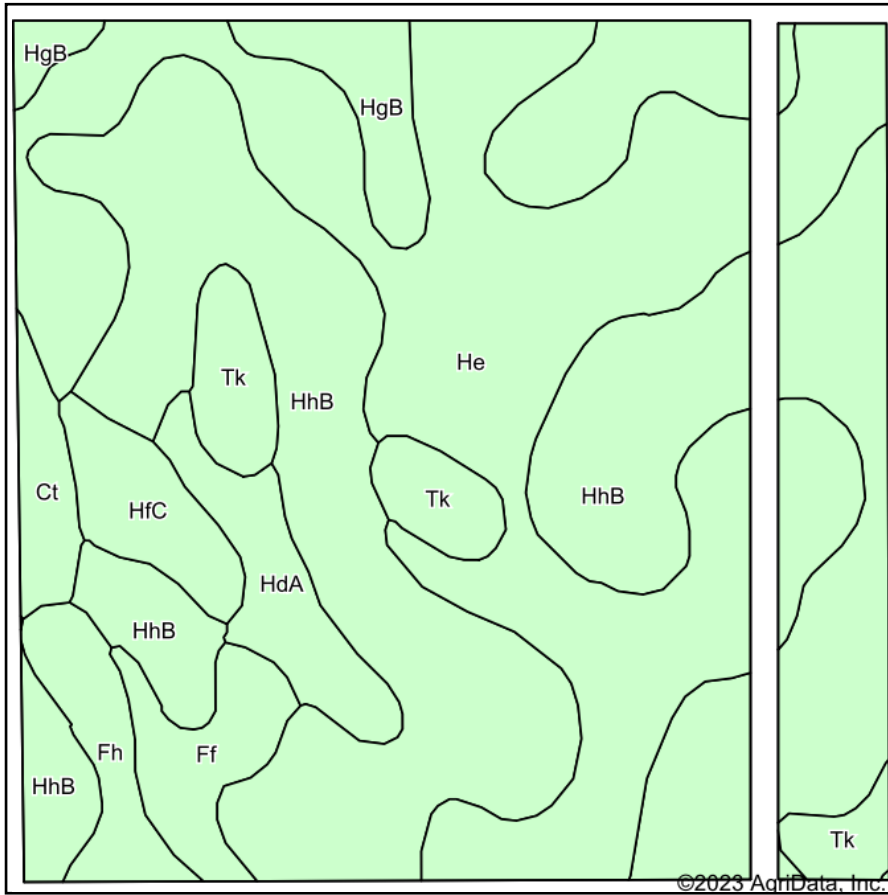
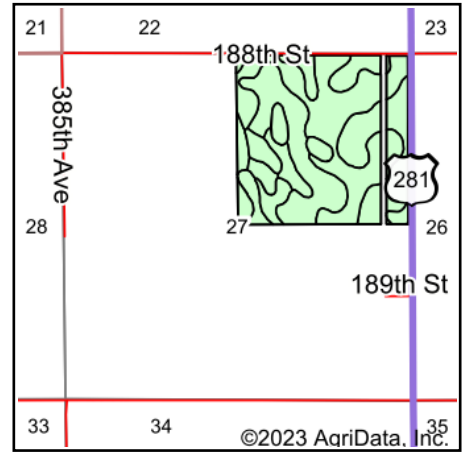


Soils Map



Soils data provided by USDA and NRCS.



State: **South Dakota**
 County: **Spink**
 Location: **27-114N-64W**
 Township: **Garfield**
 Acres: **148.52**
 Date: **12/28/2023**

ADVANTAGE
Land Co.

Maps Provided By:

 CUSTOMIZED ONLINE MAPPING
 © AgriData, Inc. 2023 www.AgriDataInc.com



Area Symbol: SD115, Soil Area Version: 24

| Code | Soil Description | Acres | Percent of field | Non-Irr Class *c | Productivity Index |
|-------------------------|--|-------|------------------|------------------|--------------------|
| HhB | Hand-Ethan-Carthage complex, 1 to 6 percent slopes | 66.26 | 44.6% | IIIe | 74 |
| He | Hand-Carthage-Overshue fine sandy loams, 0 to 3 percent slopes | 50.57 | 34.0% | IIIe | 75 |
| Tk | Toko fine sandy loam, 0 to 1 percent slopes | 6.70 | 4.5% | IVw | 57 |
| HdA | Hand-Carthage fine sandy loams, 0 to 3 percent slopes | 5.19 | 3.5% | IIIe | 77 |
| HgB | Hand-Ethan-Bonilla loams, 1 to 6 percent slopes | 4.61 | 3.1% | Ile | 79 |
| Ff | Forestburg-Elsmere loamy sands, 0 to 2 percent slopes | 4.49 | 3.0% | IVe | 66 |
| HfC | Hand-Ethan loams, 6 to 9 percent slopes | 4.07 | 2.7% | IIIe | 62 |
| Fh | Forestburg-Elsmere-Toko complex, 0 to 2 percent slopes | 3.95 | 2.7% | IVe | 65 |
| Ct | Crossplain-Tetonka complex, 0 to 1 percent slopes | 2.68 | 1.8% | IIw | 73 |
| Weighted Average | | | | 3.05 | 73 |

*c: Using Capabilities Class Dominant Condition Aggregation Method
 Soils data provided by USDA and NRCS.