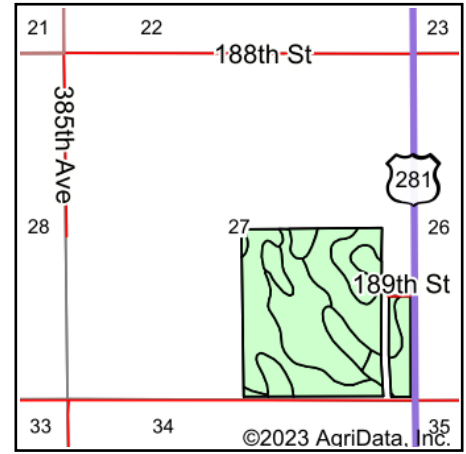
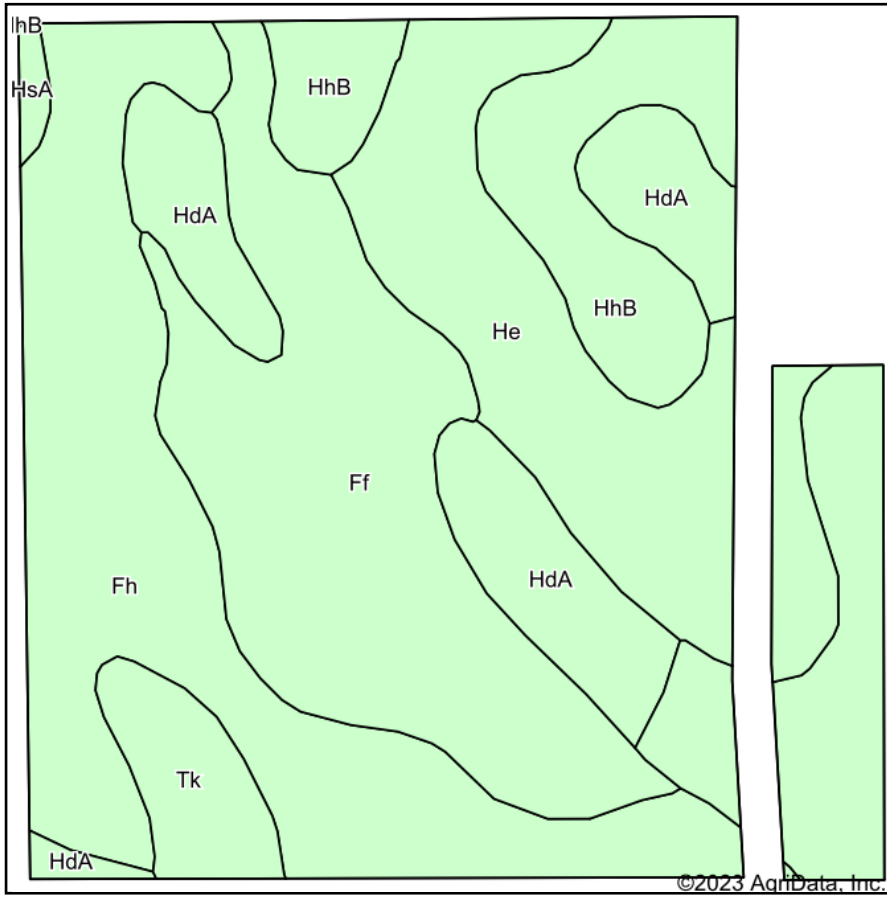


Soils Map



State: **South Dakota**
 County: **Spink**
 Location: **27-114N-64W**
 Township: **Garfield**
 Acres: **135.33**
 Date: **12/28/2023**

ADVANTAGE
Land Co.

Maps Provided By:

 CUSTOMIZED ONLINE MAPPING
 © AgriData, Inc. 2023 www.AgriDataInc.com



Area Symbol: SD115, Soil Area Version: 24

Code	Soil Description	Acres	Percent of field	Non-Irr Class *c	Productivity Index
Fh	Forestburg-Elsmere-Toko complex, 0 to 2 percent slopes	34.53	25.5%	IVe	65
Ff	Forestburg-Elsmere loamy sands, 0 to 2 percent slopes	31.52	23.3%	IVe	66
HhB	Hand-Ethan-Carthage complex, 1 to 6 percent slopes	24.66	18.2%	IIIe	74
He	Hand-Carthage-Overshue fine sandy loams, 0 to 3 percent slopes	23.20	17.1%	IIIe	75
HdA	Hand-Carthage fine sandy loams, 0 to 3 percent slopes	15.80	11.7%	IIIe	77
Tk	Toko fine sandy loam, 0 to 1 percent slopes	4.92	3.6%	IVw	57
HsA	Henkin-Blendon fine sandy loams, 0 to 2 percent slopes	0.70	0.5%	IIIe	62
Weighted Average				3.52	69.7

*c: Using Capabilities Class Dominant Condition Aggregation Method
 Soils data provided by USDA and NRCS.