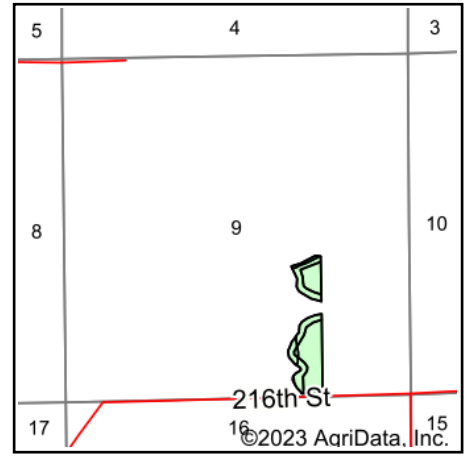
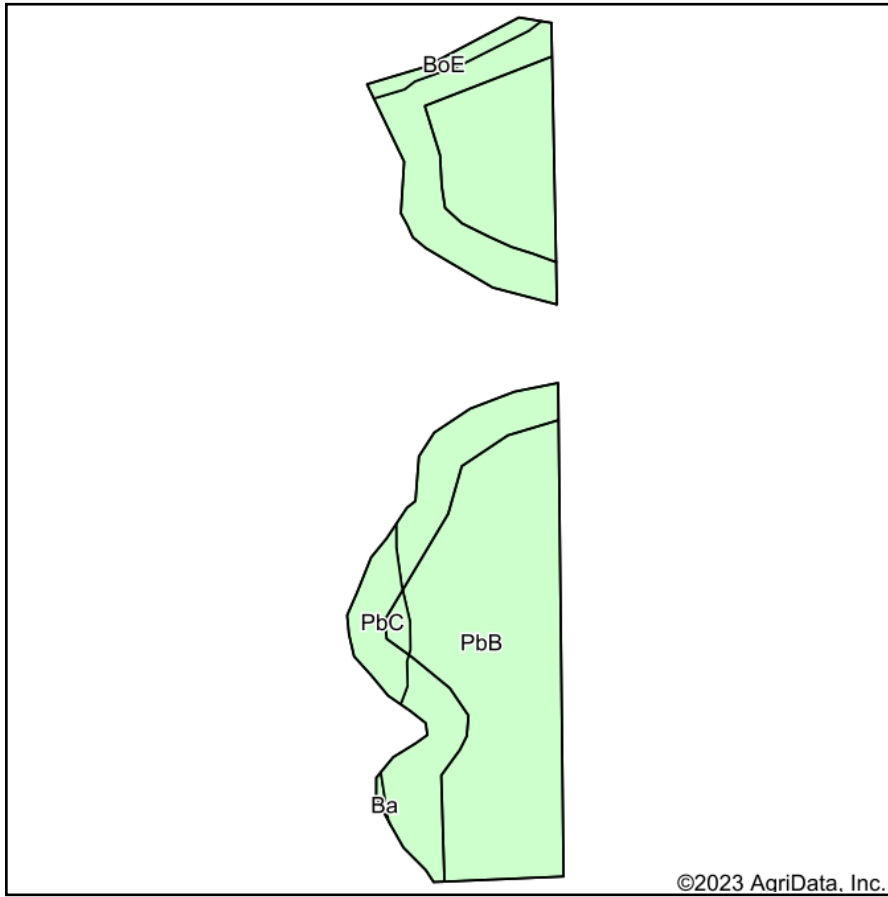


# Soils Map



State: **South Dakota**  
 County: **Brookings**  
 Location: **9-109N-52W**  
 Township: **Lake Sinai**  
 Acres: **16.02**  
 Date: **8/1/2023**

**ADVANTAGE**  
*Land Co.*

Maps Provided By:  
  
 CUSTOMIZED ONLINE MAPPING  
 © AgriData, Inc. 2023 www.AgriDataInc.com



Area Symbol: SD011, Soil Area Version: 30

Code	Soil Description	Acres	Percent of field	Non-Irr Class *c	Productivity Index
PbB	Poinsett-Buse-Waubay complex, 1 to 6 percent slopes	14.74	92.0%	Ile	81
PbC	Poinsett-Buse-Waubay complex, 2 to 9 percent slopes	0.93	5.8%	IIle	69
BoE	Buse-Langhei complex, 15 to 40 percent slopes	0.35	2.2%	VIIe	12
<b>Weighted Average</b>				<b>2.17</b>	<b>78.8</b>

\*c: Using Capabilities Class Dominant Condition Aggregation Method  
 Soils data provided by USDA and NRCS.